



Enver Acevedo  
Associate Counsel  
Law Department  
Consolidated Edison Company of New York, Inc.  
4 Irving Place, Room 1815-S, New York NY 10003  
Tel.: 212-460-3762 Fax: 212-677-5850  
Email: acevedoe@coned.com

February 27, 2026

By Electronic Mail  
Hon. Michelle L. Phillips  
Secretary to the Commission  
New York State Public Service Commission  
Three Empire State Plaza  
Albany, New York 12223-1350

**Re: Cases 24-E-0060 & 24-G-0061**  
**Orange and Rockland Electric & Gas Rate Cases**  
**Annual Capital Expenditure/O&M Report**

Dear Secretary Phillips:

In accordance with the New York Public Service Commission's Order issued March 20, 2025, in the referenced proceedings, Orange and Rockland Utilities, Inc. hereby submits its reports for Q4 RY1 (covering the period from January 2025 to December 2025) on electric and gas related capital expenditures.

Reports submitted include the following:

1. O&R Summary CapEx Twelve Months Ended December 2025 RY1
2. O&R Electric Twelve Months Ended December 2025 RY1
3. O&R Electric Projects Schedules
4. O&R Gas Twelve Months Ended December 2025 RY1
5. O&R Gas R&D Twelve Months Ended December 2025 RY1
6. O&R Common Twelve Months Ended December 2025 RY1
7. O&R O&M Expenses Twelve Months Ended December 2025 RY 1
8. Five-Year Capital Forecasts

Please contact me if you have any questions regarding this matter.

Very truly yours,

*/s/ Enver Acevedo*

# Capital Summary

## January - December 2025

	<u>Rate</u> <u>Agreement</u>	<u>Actuals</u>	<u>Variance</u>
<b>ELECTRIC DISTRIBUTION</b>	\$99,496.0	\$134,553.1	(\$35,057.1)
<b>ELECTRIC TRANSMISSION</b>	149,873.5	112,338.4	37,535.1
<b>GAS DISTRIBUTION</b>	91,327.0	112,140.3	(20,813.3)
<b>AMI*</b>	150.0	7.6	142.4
<b>COMMON</b>	<b>90,793.9</b>	<b>101,919.9</b>	<b>(11,125.9)</b>
<i>Customer Service</i>	16,283.3	15,547.6	735.7
<i>Facilities</i>	11,195.1	8,752.7	2,442.3
<i>Information Technology</i>	39,528.4	43,423.7	(3,895.3)
<i>All Other</i>	7,597.0	13,154.4	(5,557.4)
<i>Transportation</i>	16,190.2	21,041.5	(4,851.3)
	<u>\$ 431,640.3</u>	<u>\$ 460,959.3</u>	<u>\$ (29,318.9)</u>

\* AMI is included in the individual Electric, Gas, and Common documents

		Twelve Months Ending December 31, 2025			
		Rate Year 1			
Non-Blanket Program Type	Project Description	Asset Class	Rate Agreement	Actual	Variance
	Blankets		\$ 54,971.9	\$ 84,830.2	\$ (29,858.2)
	Regular Projects Under \$1 Million		6,864.8	50,753.9	(43,889.1)
	Regular Projects Over \$1 Million		189,658.6	111,308.7	78,349.9
	Viola Property	Transmission Land	1,000.8	81.0	919.7
		<b>Total Transmission Land</b>	<b>1,000.8</b>	<b>81.0</b>	<b>919.7</b>
	ORU Emergency Response Ops & Control	Office Buildings	1,250.3	-	1,250.3
	Storm Material Management Facility	Office Buildings	750.0	-	750.0
		<b>Total Office Buildings</b>	<b>2,000.3</b>	<b>-</b>	<b>2,000.3</b>
	OMS Enhancements	Software	2,000.0	-	2,000.0
	Operational Technology Infrastructure	Software	1,809.2	1,815.6	(6.4)
		<b>Total Software</b>	<b>3,809.2</b>	<b>1,815.6</b>	<b>1,993.6</b>
	34.5kV Breaker Replacement	Transmission	1,296.7	-	1,296.7
	Blooming Grove Decommissioning	Transmission	1,200.0	540.2	659.8
	Burns Terminal	Transmission	482.7	297.8	184.9
	CSX West Shore Line Structures 67 & 68	Transmission	799.7	55.5	744.2
	CSX West Shorelines Structure 190, 197, 211	Transmission	3,300.4	125.5	3,175.0
	Dean Substation Upgrade Design and Construction	Transmission	993.5	950.1	43.5
	Forest Ave Substation	Transmission	23,000.1	14,376.4	8,623.7
	Forest Avenue OH Transmission	Transmission	488.3	95.7	392.6
	Washington Heights Second 69kV Transmission Terminal	Transmission	100.0	-	100.0
	Line 31 Reconductor	Transmission	2,200.0	1,538.2	661.8
	Line 96 Double Circuit Rebuild	Transmission	4,000.1	1,621.1	2,379.0
	Lines 11/14 Pole 68	Transmission	6,153.1	-	6,153.1
	Lines 531/541 Structures 86 & 87	Transmission	500.1	31.9	468.3
	Lines 551/702 and 562 Shield Wire Pole Replacements, NYS Th	Transmission	7,500.6	961.4	6,539.1
	Lovett Flood Mitigation	Transmission	2,548.0	-	2,548.0
	New Line 705 Underground	Transmission	20,598.5	24,094.3	(3,495.9)
	New Shoemaker 34.5kV, 69 and 138 Yards	Transmission	6,000.0	576.1	5,423.9
	OH 69 kV TL from Washington Heights to Bullville	Transmission	499.9	-	499.9
	Removal of Deenergized Transmission Facilities	Transmission	2,999.9	700.1	2,299.8
	State School Road Substation	Transmission	16,300.1	12,957.8	3,342.2
	Transmission reconfiguration for Shoemaker 69/138kV yards	Transmission	1,500.0	45.0	1,455.0
	Transmission to State School Road Sub	Transmission	1,400.0	573.8	826.2
	Upgrade Line 18 to 69kV	Transmission	1,250.1	1,802.0	(551.9)
	Upgrade of Trans. Line 841, 851, 853 to 69kV	Transmission	13,914.2	3,795.3	10,118.9
	Upgrade Transmission Lines 12 & 13/131	Transmission	999.8	63.7	936.1
	West Nyack 2nd Autobank	Transmission	5,080.7	1,786.0	3,294.7
	West Nyack Breaker Replacements	Transmission	700.3	(108.2)	808.4
	Westtown 2nd 35MVA Bank and New Circuits	Transmission	1,999.9	-	1,999.9
	Wilson Gate Joi_PrjD:06125	Transmission	4,969.3	5,715.3	(746.0)
		<b>Total Transmission</b>	<b>132,776.0</b>	<b>72,595.1</b>	<b>60,180.9</b>
Selective Underground	Harriman UG SH Ckt exits 71-1,2,& 8-13	Distribution	204.6	-	204.6
Selective Underground	ADMS Phase 2-DERMS	Distribution	3,500.0	4,319.0	(819.0)
Selective Underground	Bloomingsburg SH UG 109-4-34 Winterton Rd	Distribution	199.5	51.9	147.6
Selective Underground	Bullville Substation Upgrade	Distribution	749.9	347.6	402.3
Selective Underground	Bullville Transmission Tap	Distribution	100.0	10.1	90.0
Selective Underground	Burns 2 - 56 MVA Banks	Distribution	8,500.0	9,710.9	(1,210.9)
Selective Underground	Burns UG Circuits	Distribution	1,000.0	323.1	676.9
Selective Underground	Forest Ave Mobile	Distribution	500.1	-	500.1
Selective Underground	Forest Ave Substation UG Exits	Distribution	11,000.1	10,726.6	273.5
Selective Underground	D387BX-O&R-LITTLE TOR SU	Distribution	125.0	37.5	87.5
Selective Underground	Monsey 240 MVA Banks	Distribution	4,500.7	2,034.4	2,466.3
Selective Underground	New Goshen Station	Distribution	500.1	858.6	(358.5)
Selective Underground	New Goshen Transmission Tap	Distribution	124.1	22.1	102.0
Selective Underground	New Goshen UG Circuit Exits	Distribution	250.0	231.6	18.4
Selective Underground	Old Nyack Turnpike UG Ckt 21-16-13	Distribution	500.0	697.6	(197.5)
Selective Underground	Pascack Rd UG Ckt 19-13-13	Distribution	500.1	535.6	(35.6)
Selective Underground	Snake Hill - Urd Dip (Snake Hill to Nyack) 13,200 ft	Distribution	205.0	-	205.0
Selective Underground	Sparkill Circuit Exits	Distribution	1,499.9	94.0	1,405.9
Selective Underground	State School Road Sub UG Exits	Distribution	3,500.1	3,285.8	214.3
Selective Underground	Tuxedo Park - Crows Nest to S. Gate UG SH - 5100ft	Distribution	200.0	-	200.0
Selective Underground	U/G Storm Hardening - Blue Lake Ckt Exit	Distribution	2,400.1	1,212.3	1,187.8
Selective Underground	U/G Storm Hardening - Gilchrest Rd, Congers	Distribution	10.3	-	10.3
Selective Underground	West Haverstraw - Rt 202 to Rt 9W - 6400ft	Distribution	2,500.1	1,062.2	1,437.9
Selective Underground	Westtown UG Circuit Exits	Distribution	3,000.5	-	3,000.5
Selective Underground	Blooming Grove - Helms Hill Rd & Mtn Lodge Rd - 6500ft	Distribution	1,500.7	-	1,500.7
Selective Underground	Mongaup - Mill Road (Station to Cty Rt 43) 9,000ft - 2-1-13	Distribution	1,500.7	-	1,500.7
Selective Underground	Sparkill-Ferdon-Rockland Rd. Hendrix New tie 50-2	Distribution	1,500.7	1,255.9	244.8
		<b>Total Distribution</b>	<b>50,072.3</b>	<b>36,816.9</b>	<b>13,255.4</b>
	<b>Subtotal Regular Projects Over \$ 1 Million</b>		<b>189,658.6</b>	<b>111,308.7</b>	<b>78,349.9</b>
	<b>Total</b>		<b>\$ 251,495.3</b>	<b>\$ 246,892.7</b>	<b>\$ 4,602.6</b>

Orange and Rockland Utilities, Inc.  
Electric Rate Case 24-E-0060  
Electric Plant Additions  
Twelve Months Ending December 31, 2025

<u>Project Description</u>	<u>Asset Class</u>	<u>Twelve Months</u>		
		<u>Rate Agreement</u>	<u>Rate Year 1 Actual</u>	<u>Variance</u>
Blankets		51,728.1	82,268.8	(30,540.7)
Regular Projects Under \$1 Million		7,978.7	7,215.6	763.1
<b>Regular Projects Over \$1 Million</b>		<b>40,241.1</b>	<b>60,756.2</b>	<b>(20,515.1)</b>
ARVE	Intangible	-	1,310.5	(1,310.5)
Blooming Grove - Merriewold Risk Reduction	Distribution	-	1,408.2	(1,408.2)
Blooming Grove - Helms Hill Rd & N Mtn Lodge Rd	Distribution	1,500.8	-	1,500.8
Blooming Grove UG Circuit Exits	Distribution	-	12,043.0	(12,043.0)
Blooming Grove Upgrade Two 50 MVA Banks	Transmission	-	1,047.6	(1,047.6)
Corporate Drive Cap Bank	Transmission	-	1,840.9	(1,840.9)
County Route 105 Larkin Road to Ridge Road	Distribution	-	5,280.6	(5,280.6)
CSX West Shoreline Structures 190, 197, 211	Transmission	4,103.4	-	4,103.4
DER Software Development	Intangible	-	2,701.6	(2,701.6)
Forest Ave Mobile	Distribution	1,500.2	1,393.6	106.6
Lovett 345kV Transmission	Transmission	-	2,108.9	(2,108.9)
Line 31 Reconductor	Transmission	5,669.7	1,538.1	4,131.6
Line 51 Upgrade	Transmission	-	4,229.7	(4,229.7)
Lines 11/14 Pole 68	Transmission	9,517.0	-	9,517.0
Lines 51/65, Towers 9 & 10	Transmission	-	1,104.9	(1,104.9)
Lines 531/541 Structures 86 & 87	Transmission	1,299.4	-	1,299.4
Lines 551/702 and 562 Shield Wire Pole Replacements	Transmission	8,851.8	-	8,851.8
MOAB Upgrade Program	Distribution	-	1,334.0	(1,334.0)
Mongaup - Mill Road (Stationn to Cty Rt 4d3)	Distribution	1,500.7	-	1,500.7
NYSERDA Pon 4074 Westtown Dist Automation	Distribution	-	2,708.7	(2,708.7)
OMS Enhancements	Intangible	-	5,588.2	(5,588.2)
ORU NY 2024 Storm 13 Capital	Distribution	-	1,512.3	(1,512.3)
Shoreline Protection Program - Line 98, Line 111/14	Transmission	-	2,641.8	(2,641.8)
Silver Lake Upgrade Bank 2113 to 35 MVA	Dist & Trans	-	6,074.2	(6,074.2)
Sparkill-Ferdon-Rockland Rd Hendrix New Tie 50-2	Distribution	1,500.7	-	1,500.7
State School Road Property	Distribution	-	1,493.8	(1,493.8)
U/G Storm Hardening - Thiells Mt Ivy Rd, Thiells	Distribution	-	2,363.5	(2,363.5)
Viola Property	Transmission	2,000.9	-	2,000.9
West Haverstraw 138 kV Breaker Replacements	Transmission	-	1,032.1	(1,032.1)
West Nyack Breaker Replacements	Transmission	1,499.8	-	1,499.8
34.5kV Breaker Replacement	Transmission	1,296.7	-	1,296.7
		<b>40,241.1</b>	<b>60,756.2</b>	<b>(20,515.1)</b>
<b>Total</b>		<b>\$ 99,947.9</b>	<b>\$ 150,240.6</b>	<b>\$ (50,292.7)</b>

Orange and Rockland Utilities, Inc.  
 Electric Rate Case 24-E-0060  
 Electric Rate Case - Twelve Month Update  
 Detail Breakdown - Projects Over \$1 Million  
 Twelve Months Ending December 31, 2025

Twelve Months Ending December 31, 2025  
 Rate Year 1

Project Description	Project Start Date	Rate Case in Service Date	Projected Actual in Service Date	Accounts Payable					Total \$	Remarks
				Labor	Materials	Overheads	Other			
34.5kV Breaker Replacement		Dec 2025		-	-	-	-	-	\$ -	
ADMS Phase 2-DERMS	Jan 2025	Dec 2029	Dec 2032	210.1	3,388.2	3.7	378.2	338.8	\$ 4,319.0	Added scope - enhancements to unlock more functionality
Blooming Grove Decommissioning	Jul 2025	May 2025	May 2026	88.1	266.7	6.8	171.7	6.9	\$ 540.2	Reuse of existing Bank to a future project. Env. Permit and additional demo was needed. Substantial complete by 5/31/26.
Bloomingburg SH UG 109-4-34 Winterton Rd		Jun 2027	Jun 2027	-	-	-	-	-	\$ -	
Bullville Substation Upgrade	Mar-2015	Jun 2028	Jun 2028	139.3	89.3	1.6	88.5	28.9	\$ 347.6	
Bullville Transmission Tap		Jun 2028	Jun 2028	6.3	-	-	3.8	-	\$ 10.1	
Burns 2 - 56 MVA Banks	Dec-2022	Jun 2026	Mar 2027	835.6	535.3	2,826.5	1,526.4	3,987.1	\$ 9,710.9	Due to outages restrictions
Burns Terminal	Aug-2018	Dec 2026	Dec 2026	61.0	59.7	77.5	82.6	17.0	\$ 297.8	
Burns UG Circuits	Dec-2022	Jun 2027	Jun 2027	32.8	244.4	-	45.7	0.2	\$ 323.1	
CSX West Shore Line Structures 67 & 68	Dec-2022	Dec 2026	Dec 2026	8.4	22.3	-	16.8	8.0	\$ 55.5	
CSX West Shorelines Structure 190, 197, 211	Apr-2020	Dec 2025	Dec 2026	25.6	19.0	5.1	74.9	0.9	\$ 125.5	Delays due to CSX flagging and conflict with other projects
Dean Substation Upgrade Design and Construction	Dec-2019	Dec 2027	Dec 2028	32.1	164.0	658.4	95.5	0.1	\$ 950.1	Delays due to NEPA and Env. Permitting
Forest Ave Mobile	Nov 2024	May 2025	May 2025	-	-	-	-	-	\$ -	Project was in-service on 5/30/25
Forest Ave Substation	Apr-2022	Dec 2026	May 2027	336.4	3,077.2	1,340.0	798.7	8,824.5	\$ 14,376.8	Municipal and env. Permitting delays
Forest Ave Substation UG Exits	Dec-2022	Dec 2027	Dec 2027	92.5	1,376.1	8,424.6	694.3	139.1	\$ 10,726.6	
Forest Avenue OH Transmission	Aug 2024	Dec 2026	May 2027	9.5	69.6	1.4	11.8	3.4	\$ 95.7	Municipal and env. Permitting delays
Harriman UG SH Ckt exits 71-1,2,& 8-13		Jun 2027	Jun 2027	-	-	-	-	-	\$ -	
Line 31 Reconductor	Dec-2014	Dec 2025	Dec 2026	98.9	1,259.7	78.2	79.4	22.0	\$ 1,538.2	Article XI environmental permit and outage restrictions
Line 96 Double Circuit Rebuild	Oct-2021	Dec 2027	Dec 2027	115.7	1,323.4	26.6	155.1	0.3	\$ 1,621.1	
Lines 11/14 Pole 68	Jun 2024	Dec 2025	Dec 2026	-	-	-	-	-	\$ -	Longer permitting process is expected. Project was split in 4 sub-projects
Lines 531/541 Structures 86 & 87	Dec-2022	Dec 2025	Dec 2027	2.5	19.6	-	9.8	-	\$ 31.9	Design drawings, permitting, and steel pole design expected to be complete in 2026
Lines 551/702 and 562 Shield Wire Pole Replacements, NYS Thruway	Jan-2023	Dec 2025	Dec 2026	98.8	480.6	236.1	106.7	39.2	\$ 961.4	Outage conflicts and permitting timeline
D387BX-O&R-LITTLE TOR SU	Dec-2014			5.0	30.0	3.3	2.6	(3.4)	\$ 37.5	Under litigation
Lovett Flood Mitigation		Dec 2027		-	-	-	-	-	\$ -	
Monsey 240 MVA Banks	Oct 2024	Dec 2026	Feb 2027	263.2	1,185.2	249.4	328.7	7.8	\$ 2,034.3	Due to construction sequence and needed outages
New Goshen Station	Jun-2018	Jun 2028	Jun 2028	135.2	344.7	256.6	105.3	16.8	\$ 858.6	
New Goshen Transmission Tap	Dec 2024	Jun 2028	Jun 2028	1.1	18.1	-	2.9	-	\$ 22.1	
New Goshen UG Circuit Exits	Feb 2025	Jun 2028	Jun 2028	24.5	33.5	147.4	26.2	-	\$ 231.6	
New Line 705 Underground	Nov-2017	Dec 2026	Dec 2026	422.8	21,359.8	198.7	1,571.8	541.2	\$ 24,094.3	
New Shoemaker 34.5kV, 69 and 138 Yards	May-2020	Dec 2029	Dec 2029	223.0	82.6	77.4	166.4	26.7	\$ 576.1	
OH 69 kV TL from Washington Heights to Bullville		Dec 2028	Dec 2028	-	-	-	-	-	\$ -	
Old Nyack Turnpike UG Ckt 21-16-13		Dec 2026	Dec 2026	9.3	194.2	409.7	83.5	0.9	\$ 697.6	
OMS Enhancements		Dec 2028		-	-	-	-	-	\$ -	
Operational Technology Infrastructure	Jan 2024	Dec 2028	Dec 2028	-	1,266.7	-	41.4	507.5	\$ 1,815.6	On target
ORU Emergency Response Ops & Control		Jan 2029		-	-	-	-	-	\$ -	
Pascack Rd UG Ckt 19-13-13		Dec 2026	Dec 2026	17.8	119.7	297.1	87.1	13.9	\$ 535.6	
Removal of Deenergized Transmission Facilities		Dec 2033		162.7	236.3	3.5	295.8	1.8	\$ 700.1	
Snake Hill - Urd Dip (Snake Hill to Nyack) 13,200 ft		Dec 2027	Dec 2027	-	-	-	-	-	\$ -	
Sparkill Circuit Exits		Dec 2026	Dec 2026	18.6	57.7	-	17.7	-	\$ 94.0	
State School Road Sub UG Exits	Aug 2024	Dec 2026	May 2027	60.0	100.5	3,023.0	96.0	6.3	\$ 3,285.8	Project needed prior summer load. Long lead breakers delivery date
State School Road Substation	Dec-2022	Dec 2026	May 2027	322.6	2,383.2	3,553.0	876.7	5,822.3	\$ 12,957.8	Project needed prior summer load. Long lead breakers delivery date
Storm Material Management Facility		Jan 2029		-	-	-	-	-	\$ -	
Transmission reconfiguration for Shoemaker 69/138kV yards	Dec-2022	Dec 2028	Dec 2028	5.6	33.8	-	5.6	-	\$ 45.0	
Transmission to State School Road Sub	Aug 2024	Dec 2026	May 2027	16.3	115.3	-	23.6	417.7	\$ 573.8	Project needed prior summer load. Long lead breakers delivery date
Tuxedo Park - Crows Nest to S. Gate UG SH - 5100ft		Dec 2026	Dec 2027	-	-	-	-	-	\$ -	Project delayed due to other higher priority projects
U/G Storm Hardening - Blue Lake Ckt Exit		Dec 2026	Dec 2026	52.6	99.6	796.2	226.6	37.3	\$ 1,212.3	
U/G Storm Hardening - Gilchrest Rd, Congers		Dec 2027	Dec 2027	-	-	-	-	-	\$ -	
Upgrade Line 18 to 69kV		Dec 2028	Dec 2028	49.6	1,652.6	2.3	97.0	0.5	\$ 1,802.0	
Upgrade of Trans. Line 841, 851, 853 to 69kV	Dec-2019	Dec 2027	Dec 2028	196.6	2,967.8	5.0	535.0	90.9	\$ 3,795.3	Delays due to NEPA and Env. Permitting
Upgrade Transmission Lines 12 & 13/131	Jul-2022	Dec 2030	Dec 2030	9.0	23.9	-	30.8	-	\$ 63.7	
Viola Property		Jun 2025	Jun 2025	34.3	15.7	-	31.0	-	\$ 81.0	
Washington Heights Second 69kV Transmission Terminal		Jun 2028	Jun 2028	-	-	-	-	-	\$ -	
West Haverstraw - Rt 202 to Rt 9W - 6400ft	Aug-2022	Dec 2026	Dec 2026	37.9	12.0	772.0	198.1	42.2	\$ 1,062.2	
West Nyack 2nd Autobank	Aug-2018	Dec 2026	Dec 2026	111.0	54.4	1,324.7	267.8	28.1	\$ 1,786.0	Per 5-year plan
West Nyack Breaker Replacements		Dec 2025	Dec 2031	(4.2)	-	(113.1)	9.1	-	\$ (108.2)	Substation upgrade priority
Westtown 2nd 35MVA Bank and New Circuits	Mar 2015	Jun 2026	Dec 2027	-	-	-	-	-	\$ -	Project was combined to include the Westtown Bank Replacement Project. Construction sequence impact
Westtown UG Circuit Exits		Jun 2026	Dec 2027	-	-	-	-	-	\$ -	Project was combined to include the Westtown Bank Replacement Project. Construction sequence impact
Wilson Gate Joi_PriID:06125	Nov-2019	Dec 2027	Dec 2028	175.8	194.5	2,995.0	379.1	1,970.9	\$ 5,715.3	Delays due to NEPA and Env. Permitting
OMS Enhancements				-	-	-	-	-	\$ -	
Sparkhill-Ferdon-Rockland Rd. Hendrix New tie 50-2				663.7	-	443.3	148.7	0.2	\$ 1,255.9	
Bloomingburg SH UG 109-4-34 Winterton Rd				51.3	-	-	0.6	-	\$ 51.9	
<b>TOTAL</b>				<b>\$ 5,258.9</b>	<b>\$ 44,976.9</b>	<b>\$ 28,131.9</b>	<b>\$ 9,995.0</b>	<b>\$ 22,946.0</b>	<b>\$ 111,308.7</b>	

Orange and Rockland Utilities, Inc.  
Electric Rate Case 24-E-0060  
Electric Rate Case - Twelve Month Update  
Total Estimate and Spending Summary - Projects Over \$1 million  
Twelve Months Ending December 31, 2025

<u>Project Description</u>	<u>Original Estimate</u>	<u>Current Estimate</u>	<u>Delta from original Estimate</u>	<u>Delta percent from original Estimate</u>	<u>Reason for difference</u>	<u>Total Project Spending Thru 12/31/2025</u>
34.5kV Breaker Replacement	\$ 1,296.7	\$ 1,296.7	\$ -	0%		\$ -
ADMS Phase 2-DERMS	\$ 11,000.0	\$ 14,000.0	\$ (3,000.0)	-27%	Added scope - enhancements to unlock more functionality - estimate for current rate case only	\$ 5,776.2
Blooming Grove Decommissioning	\$ 1,200.0	\$ 740.0	\$ 460.0	38%	Re-use of existing bank	\$ 568.2
Bloomingburg SH UG 109-4-34 Winterton Rd	\$ 3,082.8	\$ 3,082.8	\$ -	0%		\$ 52.3
Bullville Substation Upgrade	\$ 16,750.1	\$ 15,750.0	\$ 1,000.1	6%	In Service Date revised to Dec 2029	\$ 432.4
Bullville Transmission Tap	\$ 1,499.6	\$ 500.0	\$ 999.6	67%	In Service Date revised to June 2029	\$ 11.3
Burns 2 - 56 MVA Banks	\$ 12,000.1	\$ 18,147.0	\$ (6,146.9)	-51%	Cost increase due to accelerated spend in the current year	\$ 10,728.2
Burns Terminal	\$ 2,744.3	\$ 4,598.0	\$ (1,853.7)	-68%	Civil Scope Increase, IT Communications and Fiber Optics New Scope	\$ 965.8
Burns UG Circuits	\$ 8,000.0	\$ 15,500.0	\$ (7,500.0)	-94%		\$ 444.9
CSX West Shore Line Structures 67 & 68	\$ 1,600.3	\$ 1,600.3	\$ -	0%		\$ 252.0
CSX West Shorelines Structure 190, 197, 211	\$ 3,300.4	\$ 2,847.0	\$ 453.4	14%		\$ 1,099.9
Dean Substation Upgrade Design and Construction	\$ 1,860.2	\$ 1,697.0	\$ 163.2	9%	Delays to energization due to Nepa process and Env. Permitting	\$ 1,662.0
Forest Ave Mobile	\$ 500.1	\$ 1,051.0	\$ (550.9)	-110%	Project Delayed	\$ -
Forest Ave Substation	\$ 36,000.0	\$ 51,942.0	\$ (15,942.0)	-44%	Construction Bids higher than Budget	\$ 16,538.8
Forest Ave Substation UG Exits	\$ 28,500.1	\$ 26,500.0	\$ 2,000.1	7%		\$ 11,079.7
Forest Avenue OH Transmission	\$ 2,650.0	\$ 3,865.0	\$ (1,215.0)	-46%	Construction Bids higher than Budget	\$ 193.7
Harriman UG SH Ckt exits 71-1,2,& 8-13	\$ 1,439.2	\$ 1,439.2	\$ -	0%		\$ -
Line 31 Reconductor	\$ 2,200.0	\$ 3,588.0	\$ (1,388.0)	-63%	Cost increase due to additional to env. and construction contract requirements	\$ 9,609.6
Line 96 Double Circuit Rebuild	\$ 36,055.9	\$ 31,589.0	\$ 4,466.9	12%	Temporary Construction Scope Reduction and Changing Scope of all Steel Poles to Steel and Wood Poles	\$ 2,545.4
Lines 11/14 Pole 68	\$ 6,153.1	\$ 3,376.0	\$ 2,777.1	45%	Original Estimate was for the Lines 11-14 & 111-14 with multiple poles and Current Estimate is for Pole 68 only	\$ -
Lines 531/541 Structures 86 & 87	\$ 500.1	\$ 500.1	\$ -	0%		\$ 172.3
Lines 551/702 and 562 Shield Wire Pole Replacements, NYS ThruwayCr	\$ 7,500.6	\$ 8,277.0	\$ (776.4)	-10%		\$ 1,499.1
D387BX-O&R-LITTLE TOR SU	\$ 375.0	\$ 198.0	\$ 177.0	47%	Project currently under litigation	\$ 6,901.3
Lovett Flood Mitigation	\$ 13,203.2	\$ 13,203.2	\$ -	0%		\$ -
Monsey 240 MVA Banks	\$ 9,001.1	\$ 7,486.0	\$ 1,515.1	17%	Transformer Scope Change - Using an existing transformers from another substation	\$ 2,523.6
New Goshen Station	\$ 18,900.4	\$ 14,335.0	\$ 4,565.4	24%	In Service Date revised to June 2029. Construction mobilization delayed	\$ 2,650.1
New Goshen Transmission Tap	\$ 2,483.0	\$ 2,257.0	\$ 226.0	9%	In Service Date revised to June 2029. Construction mobilization delayed	\$ 34.8
New Goshen UG Circuit Exits	\$ 4,999.4	\$ 8,500.0	\$ (3,500.6)	-70%	Project not budgeted to estimate	\$ 243.7
New Line 705 Underground	\$ 38,598.4	\$ 42,100.0	\$ (3,501.6)	-9%		\$ 33,117.6
New Shoemaker 34.5kV, 69 and 138 Yards	\$ 32,999.9	\$ 14,576.0	\$ 18,423.9	56%	In Service Date revised to December 2030	\$ 1,046.8
OH 69 kV TL from Washington Heights to Bullville	\$ 21,999.9	\$ 8,500.0	\$ 13,499.9	61%	In Service Date revised to December 2029	\$ -
Old Nyack Turnpike UG Ckt 21-16-13	\$ 1,200.0	\$ 1,200.0	\$ -	0%		\$ 661.3
OMS Enhancements	\$ 6,000.0	\$ 6,000.0	\$ -	0%		\$ -
Operational Technology Infrastructure	\$ 3,532.9	\$ 3,532.9	\$ 0.0	0%	No changes	\$ 2,387.3
ORU Emergency Response Ops & Control	\$ 14,547.5	\$ 14,547.5	\$ -	0%		\$ -
Pascack Rd UG Ckt 19-13-13	\$ 1,199.7	\$ 1,199.7	\$ -	0%		\$ 800.9
Removal of Deenergized Transmission Facilities	\$ 8,000.4	\$ 8,000.4	\$ -	0%		\$ 1,256.3
Snake Hill - Urd Dip (Snake Hill to Nyack) 13,200 ft	\$ 8,593.4	\$ 8,593.4	\$ -	0%		\$ -
Sparkill Circuit Exits	\$ 3,000.0	\$ 3,000.0	\$ -	0%		\$ 96.3
State School Road Sub UG Exits	\$ 6,000.1	\$ 10,500.0	\$ (4,499.9)	-75%		\$ 3,403.1
State School Road Substation	\$ 31,600.1	\$ 42,798.0	\$ (11,197.9)	-35%	Estimate higher than Budget	\$ 13,746.2
Storm Material Management Facility	\$ 19,029.8	\$ 19,029.8	\$ -	0%		\$ -
Transmission reconfiguration for Shoemaker 69/138kV yards	\$ 6,501.6	\$ 2,151.0	\$ 4,350.6	67%	In Service Date revised to December 2029	\$ 49.3
Transmission to State School Road Sub	\$ 2,999.8	\$ 3,234.0	\$ (234.2)	-8%	Estimate higher than Budget	\$ 638.2
Tuxedo Park - Crows Nest to S. Gate UG SH - 5100ft	\$ 2,000.2	\$ 2,000.2	\$ -	0%		\$ -
U/G Storm Hardening - Blue Lake Ckt Exit	\$ 3,800.1	\$ 3,800.1	\$ -	0%		\$ 1,394.6
U/G Storm Hardening - Gilchrest Rd, Congers	\$ 2,010.4	\$ 2,010.4	\$ -	0%		\$ -

Activity ID	Activity Name	Original Duration	Duration % Complete	Start	Finish	2026												2027												2028											
						N	D	Jan	F	Mar	Apr	M	Jun	Jul	Aug	Sep	Oct	N	D	Jan	F	Mar	Apr	May	Jun	Jul	Aug	S	Oct	N	D	Jan	F	Mar	Apr	M	Jun	Jul	Aug	S	Oct
<b>P-5378 Blooming Grove Decommission</b>		82.5d	3.03%	10-Nov-25 A	03-Apr-26	03-Apr-26, P-5378 Blooming Grove Decommission																																			
<b>P-5378.5 Construction</b>		52.5d	4.76%	10-Nov-25 A	20-Feb-26	20-Feb-26, P-5378.5 Construction																																			
<b>P-5378.5.6 Decommissioning</b>		22.5d	11.11%	10-Nov-25 A	10-Jan-26	10-Jan-26, P-5378.5.6 Decommissioning																																			
CONST360	Dismantling of Equipment and Structures	20.0d	100%	10-Nov-25 A	12-Dec-25 A	Dismantling of Equipment and Structures																																			
CONST350	Removal of Hazardous Materials	5.0d	0%	15-Dec-25*	20-Dec-25	Removal of Hazardous Materials																																			
CONST370	Removal of Foundations and Underground Utilities:	22.0d	0%	15-Dec-25	10-Jan-26	Removal of Foundations and Underground Utilities:																																			
<b>P-5378.5.10 Site Restoration</b>		20.0d	0%	12-Jan-26	06-Feb-26	06-Feb-26, P-5378.5.10 Site Restoration																																			
CONST400	Backfilling and Grading	10.0d	0%	12-Jan-26	23-Jan-26	Backfilling and Grading:																																			
CONST410	Revegetation and Landscaping	10.0d	0%	26-Jan-26	06-Feb-26	Revegetation and Landscaping																																			
<b>P-5378.5.11 Final Inspection and Documentation</b>		10.0d	0%	09-Feb-26	20-Feb-26	20-Feb-26, P-5378.5.11 Final Inspection and Documentation																																			
CONST470	Final Site Inspection	5.0d	0%	09-Feb-26	13-Feb-26	Final Site Inspection																																			
CONST480	Completion of Decommissioning Report	5.0d	0%	16-Feb-26	20-Feb-26	Completion of Decommissioning Report																																			
<b>P-5378.7 Project Closeout</b>		30.0d	0%	23-Feb-26	03-Apr-26	03-Apr-26, P-5378.7 Project Closeout																																			
CLOSE010	Project Closeout	30.0d	0%	23-Feb-26	03-Apr-26	Project Closeout:																																			

Activity ID	Activity Name	Original Duration	Duration % Complete	Start	Finish	2026												2027											
						Nov	Dec	Jan	Feb	Mar	Apr	May	Jun	Jul	Aug	Sep	Oct	Nov	Dec	Jan	Feb	Mar	Apr	May	Jun	Jul	Aug	Sep	Oct
<b>Burns 2- 56MVA Banks</b>						28-Mar-27, Burns 2-56MVA Banks																							
<b>Engineering Design</b>						19-Feb-26, Engineering Design																							
<b>Physical Build</b>						01-Dec-25, Physical Build																							
A1560	Physical Build	85.0d	74.12%	08-Sep-25 A	01-Dec-25	Physical Build																							
<b>Drafting/wiring</b>						19-Feb-26, Drafting/wiring																							
A1590	Point to Point Wiring	123.0d	96.75%	14-Jul-25 A	13-Nov-25	Point to Point Wiring																							
A1570	Site	80.0d	0%	02-Dec-25*	19-Feb-26	Site																							
A1580	Electrical Configuration	60.0d	0%	02-Dec-25*	30-Jan-26	Electrical Configuration																							
<b>Substitution Build &amp; Wiring (estimated)</b>						30-Nov-25, Substitution Build & Wiring (estimated)																							
A1880	Point to Point Electrical Design	154.0d	86.36%	30-Jun-25 A	30-Nov-25	Point to Point Electrical Design																							
A1890	Build Drawings	154.0d	86.36%	30-Jun-25 A	30-Nov-25	Build Drawings																							
<b>Permitting</b>						14-Mar-26, Permitting																							
A1600	Municipal	100.0d	100%	30-Jun-25 A	10-Nov-25	Municipal																							
A1610	Environmental	100.0d	100%	30-Jun-25 A	10-Nov-25	Environmental																							
<b>Municipal Permitting</b>						14-Mar-26, Municipal Permitting																							
A1790	Clarkstown Special Permit (estimated)	151.0d	44.37%	04-Sep-25 A	01-Feb-26	Clarkstown Special Permit (estimated)																							
A1780	Clarkstown Planning Board Public Hearing	25.0d	60%	25-Sep-25 A	19-Nov-25	Clarkstown Planning Board Public Hearing																							
A1810	Planning Board - Determination (Neg Dec)	25.0d	0%	20-Nov-25	14-Dec-25	Planning Board - Determination (Neg Dec)																							
A2040	Zoning Board - Request for Variances	30.0d	0%	15-Dec-25	13-Jan-26	Zoning Board - Request for Variances																							
A2045	Zoning Board Trip #2 - Request for Variances	30.0d	0%	14-Jan-26	12-Feb-26	Zoning Board Trip #2 - Request for Variances																							
A2050	Planning Board - Final Resolution	30.0d	0%	13-Feb-26	14-Mar-26	Planning Board - Final Resolution																							
<b>Environmental Permitting (estimated)</b>						02-Dec-25, Environmental Permitting (estimated)																							
A1820	Ecological Report Revisions (and Tree Survey)	1.0d	0%	02-Dec-25	02-Dec-25	Ecological Report Revisions (and Tree Survey)																							
A1830	Ecological Report Revisions (and Tree Survey)	1.0d	0%	02-Dec-25	02-Dec-25	Ecological Report Revisions (and Tree Survey)																							
A1840	NYS DEC Article 24 Permit	1.0d	0%	02-Dec-25	02-Dec-25	NYS DEC Article 24 Permit																							
A1850	ACOE Nationwide Permit 57	1.0d	0%	02-Dec-25	02-Dec-25	ACOE Nationwide Permit 57																							
A1860	RCDA Stream Control Act Permit	1.0d	0%	02-Dec-25	02-Dec-25	RCDA Stream Control Act Permit																							
A1870	Floodplain Development Permit	1.0d	0%	02-Dec-25	02-Dec-25	Floodplain Development Permit																							
<b>Long lead time Equipment order</b>						20-Dec-26, Long lead time Equipment order																							
A1640	Order Swithgear	732.0d	96.99%	01-Dec-23 A	01-Dec-25	Order Swithgear																							
A1650	Receive Swithgear	0.0d	0%	01-Dec-23 A	01-Mar-26	Receive Swithgear																							
A1710	Setting Transformer - Swithgear - breakers	15.0d	0%	01-Sep-26*	15-Sep-26	Setting Transformer - Swithgear - breakers																							
A1720	Substation Physical Build	62.0d	0%	01-Sep-26*	01-Nov-26	Substation Physical Build																							
A1730	Wiring	62.0d	0%	15-Oct-26*	15-Dec-26	Wiring																							
A1740	Substation Checkout	0.0d	0%	01-Dec-26*	20-Dec-26*	Substation Checkout																							
<b>Civil Contractor Civil Engineering &amp; Permiting</b>						23-Jul-26, Civil Contractor Civil Engineering & Permiting																							
A1060	Bid Civil	80.0d	0%	16-Mar-26	03-Jul-26	Bid Civil																							
A1070	Civil award	0.0d	0%	04-Jul-26*	04-Jul-26*	Civil award																							
A1065	Questions Due from Bidders	20.0d	0%	04-Jul-26*	23-Jul-26	Questions Due from Bidders																							
<b>Construction</b>						13-Mar-27, Construction																							
A1030	Start of Construction	100.0d	0%	14-Nov-26	21-Feb-27	Start of Construction																							
<b>Contract Services</b>						13-Nov-26, Contract Services																							
A1940	Request for Proposal - Develop and Issue RFP to Contractor	15.0d	0%	24-Jul-26	13-Aug-26	Request for Proposal - Develop and Issue RFP to Contractor																							
A1950	Pre-Bid Meeting - Conduct a pre-bid meeting with potential contractors	2.0d	0%	14-Aug-26	17-Aug-26	Pre-Bid Meeting - Conduct a pre-bid meeting with potential contractors																							
A1960	Proposal Submission - Receive and review proposals from contractors	10.0d	0%	18-Aug-26	31-Aug-26	Proposal Submission - Receive and review proposals from contractors																							
A1970	Bid Evaluation - Perform a detailed evaluation of the bids,	10.0d	0%	01-Sep-26	14-Sep-26	Bid Evaluation - Perform a detailed evaluation of the bids,																							
A1980	Bid Negotiations - Engage in negotiations with selected contractor	5.0d	0%	15-Sep-26	21-Sep-26	Bid Negotiations - Engage in negotiations with selected contractor																							
A1990	Contract Award - Award Contract to Selected Contractor	2.0d	0%	22-Sep-26	23-Sep-26	Contract Award - Award Contract to Selected Contractor																							
A2000	Kick-Off Meeting - Align on project objectives, roles, responsibilities, and communication protcol	2.0d	0%	24-Sep-26	25-Sep-26	Kick-Off Meeting - Align on project objectives, roles, responsibilities, and communication protocols																							
A2010	Contractor Detailed Engineer and Design - developing technical drawings, specifications, and	20.0d	0%	28-Sep-26	23-Oct-26	Contractor Detailed Engineer and Design - developing technical drawings, specifications, and procurement																							
A2020	Review Contractor Detailed Engineering and Design	5.0d	0%	26-Oct-26	30-Oct-26	Review Contractor Detailed Engineering and Design																							
A2030	Negotiate and Approve Contractor Detailed Engineering Design for Construction Start	10.0d	0%	02-Nov-26	13-Nov-26	Negotiate and Approve Contractor Detailed Engineering Design for Construction Start																							
<b>Civil Construction (estimated)</b>						13-Mar-27, Civil Construction (estimated)																							
A1900	Construction Bid	20.0d	0%	24-Jul-26	12-Aug-26	Construction Bid																							

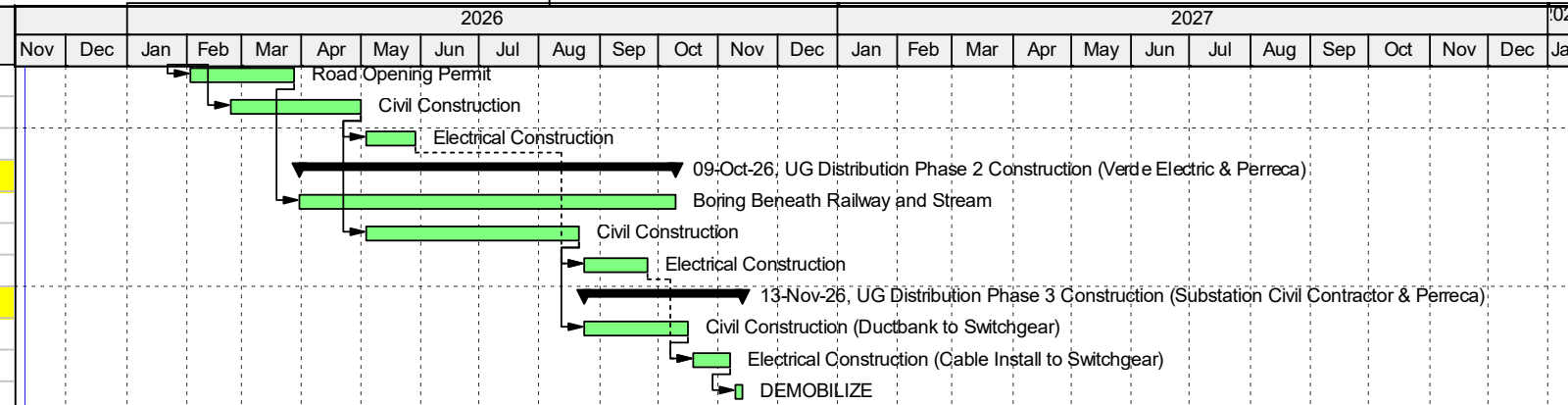
— Primary Baseline   
 ■ Remaining Work   
 ◆ Milestone  
■ Actual Work   
 ■ Critical Remaining Work   
 ▶ Summary





Activity ID	Activity Name	Original Duration	Duration % Complete	Start	Finish	2026												2027											
						Nov	Dec	Jan	Feb	Mar	Apr	May	Jun	Jul	Aug	Sep	Oct	Nov	Dec	Jan	Feb	Mar	Apr	May	Jun	Jul	Aug	Sep	Oct
<b>Forest Ave Sub</b>		407.0d	15.97%	15-Oct-24 A	02-Mar-27																								
<b>Forest Ave RFP</b>		417.0d	1.44%	04-Nov-25 A	25-Dec-26																								
A1250	Issue PO For Electrical and Civil Construction	23.0d	26.09%	04-Nov-25 A	26-Nov-25																								
A1300	Electrical and Civil Construction	394.0d	0%	27-Nov-25*	25-Dec-26																								
A1350	In-service	0.0d	0%		25-Dec-26*																								
<b>Design Consultant</b>		59.0d	0.21%	07-Nov-25 A	29-Jan-26																								
<b>Contract Services</b>		59.0d	0.21%	07-Nov-25 A	29-Jan-26																								
A1600	Bid Negotiations - Engage in negotiations with selected contractor	20.0d	0.63%	07-Nov-25 A	05-Dec-25																								
A1610	Contract Award - Award Contract to Selected Contractor	2.0d	0%	05-Dec-25	09-Dec-25																								
A1620	Kick-Off Meeting - Align on project objectives, roles, responsibilities, and communication protocols	2.0d	0%	09-Dec-25	11-Dec-25																								
A1630	Contractor Detailed Engineer and Design - developing technical drawings, specifications, and procurement plans	20.0d	0%	11-Dec-25	08-Jan-26																								
A1640	Review Contractor Detailed Engineering and Design	5.0d	0%	08-Jan-26	15-Jan-26																								
A1650	Negotiate and Approve Contractor Detailed Engineering Design for Construction Start	10.0d	0%	15-Jan-26	29-Jan-26																								
<b>Engineering Services</b>		10.0d	0%	01-Jan-26	15-Jan-26																								
A1500	Bid Review and Contractor Selection support	10.0d	0%	01-Jan-26	15-Jan-26																								
A1510	SWPPP Inspections	10.0d	0%	01-Jan-26	15-Jan-26																								
<b>Procurement</b>		6.0d	0%	15-Oct-24 A	24-Apr-26																								
A1770	Circuit Breakers	6.0d	83.33%	15-Oct-24 A	10-Nov-25																								
A1760	Switchgear	6.0d	0%	02-Jun-25 A	24-Apr-26																								
<b>Construction</b>		283.1d	0%	29-Jan-26	02-Mar-27																								
A1520	Mobilization For Construction	3.0d	0%	29-Jan-26	01-Feb-26																								
A1530	Engineering Support During Construction	180.0d	0%	01-Feb-26	31-Jul-26																								
A1540	Civil Construction Engineering Support	100.0d	0%	01-Feb-26	12-May-26																								
A1780	Electrical Construction Engineering Support	80.0d	0%	12-May-26	31-Jul-26																								
A1550	As-Built & Project Close-Out	100.0d	0%	31-Jul-26	18-Dec-26																								
<b>Forest Avenue - Substation &amp; Transmission</b>		267.0d	0%	23-Feb-26	02-Mar-27																								
A1790	Site Survey	10.0d	0%	23-Feb-26*	06-Mar-26																								
A1800	ROW Clearing & Access	20.0d	0%	23-Feb-26	20-Mar-26																								
A1810	Soil Erosion & Sediment Control Measures	20.0d	0%	23-Feb-26	20-Mar-26																								
A1820	Retaining Wall Installation	102.0d	0%	09-Mar-26	28-Jul-26																								
A1840	Stormwater Remediation	30.0d	0%	23-Mar-26	01-May-26																								
A1830	T-Line Foundation Installation	52.0d	0%	18-May-26	28-Jul-26																								
A1860	UG Distribution Duct Bank Installation	92.0d	0%	26-May-26	30-Sep-26																								
A1880	Substation Foundation Installation (Including Cure)	82.0d	0%	09-Jun-26	30-Sep-26																								
A1870	T-Line Structure Installation	11.0d	0%	15-Jul-26	29-Jul-26																								
A1910	Ground Grid Installation	61.0d	0%	15-Jul-26	07-Oct-26																								
A1850	Substation Earthwork & Grading	41.0d	0%	29-Jul-26	23-Sep-26																								
A1890	T-Line Structure Removals	10.0d	0%	29-Jul-26	11-Aug-26																								
A1920	Fencing & Site Security	41.0d	0%	05-Aug-26	30-Sep-26																								
A1900	Matting & Access Removals	10.0d	0%	12-Aug-26	25-Aug-26																								
A1930	UG Conduit and Cable Trench (Within Substation)	51.0d	0%	12-Aug-26	21-Oct-26																								
A1940	Installation of Structures	41.0d	0%	19-Aug-26	14-Oct-26																								
A1980	Foundations Ready to Accept Equipment	0.0d	0%	01-Sep-26																									
A1950	Equipment Setting	41.0d	0%	02-Sep-26	28-Oct-26																								
A1960	Bus Installation	63.0d	0%	01-Oct-26	28-Dec-26																								
A1970	Cable Pulls	40.0d	0%	01-Oct-26	25-Nov-26																								
A1990	Terminations	64.0d	0%	22-Oct-26	19-Jan-27																								
A2000	Testing & Commissioning	64.0d	0%	19-Nov-26	16-Feb-27																								
A2020	Landscaping	30.0d	0%	20-Jan-27	02-Mar-27																								
A2010	Site Restoration & Punch List Completion	20.0d	0%	03-Feb-27	02-Mar-27																								
A2030	Energization of Substation	0.0d	0%	17-Feb-27																									
A2040	Construction Completion	0.0d	0%		02-Mar-27																								
<b>UG Distribution Phase 1 Construction (Verde Electric &amp; Perreca)</b>		85.0d	0%	02-Feb-26	29-May-26																								

Activity ID	Activity Name	Original Duration	Duration % Complete	Start	Finish	2026												2027											
						Nov	Dec	Jan	Feb	Mar	Apr	May	Jun	Jul	Aug	Sep	Oct	Nov	Dec	Jan	Feb	Mar	Apr	May	Jun	Jul	Aug	Sep	Oct
A1680	Road Opening Permit	40.0d	0%	02-Feb-26	27-Mar-26																								
A1660	Civil Construction	50.0d	0%	23-Feb-26	01-May-26																								
A1670	Electrical Construction	20.0d	0%	04-May-26	29-May-26																								
<b>UG Distribution Phase 2 Construction (Verde Electric &amp; Perreca)</b>		<b>140.0d</b>	<b>0%</b>	<b>30-Mar-26</b>	<b>09-Oct-26</b>																								
A1710	Boring Beneath Railway and Stream	140.0d	0%	30-Mar-26	09-Oct-26																								
A1690	Civil Construction	80.0d	0%	04-May-26	21-Aug-26																								
A1700	Electrical Construction	25.0d	0%	24-Aug-26	25-Sep-26																								
<b>UG Distribution Phase 3 Construction (Substation Civil Contractor &amp; Perreca)</b>		<b>60.0d</b>	<b>0%</b>	<b>24-Aug-26</b>	<b>13-Nov-26</b>																								
A1720	Civil Construction (Ductbank to Switchgear)	40.0d	0%	24-Aug-26	16-Oct-26																								
A1730	Electrical Construction (Cable Install to Switchgear)	15.0d	0%	19-Oct-26	06-Nov-26																								
A1740	DEMOBILIZE	5.0d	0%	09-Nov-26	13-Nov-26																								



— Primary Baseline     ■ Remaining Work     ◆ Milestone  
■ Actual Work     ■ Critical Remaining Work     ▶ Summary

Activity ID	Activity Name	Original Duration	Duration % Complete	Start	Finish	2026												2027												2028											
						F	Mar	Apr	May	Jun	Jul	Aug	Sep	Oct	Nov	Dec	Jan	Feb	Mar	Apr	May	Jun	Jul	Aug	Sep	Oct	Nov	Dec	Jan	Feb	Mar	Apr	May	Jun	Jul	Aug	Sep	Oct	Nov	Dec	Jan
<b>Monsey 2-40MVA Banks and Breaker Upgrade</b>						20-Mar-27, Monsey 2-40MVA Banks and Breaker Upgrade																																			
<b>Construction</b>						01-Mar-27, Construction																																			
<b>Phase 1</b>						22-Apr-26, Phase 1																																			
A1280	Furnish & Install Secondary Oil Containment System Gianfia	4.0d	3.13%	13-Feb-26 A	19-Feb-26	Furnish & Install Secondary Oil Containment System Gianfia																																			
A1960	Furnish & Install ( Conduits & Grounding) Gianfia	5.0d	0%	19-Feb-26	26-Feb-26	Furnish & Install ( Conduits & Grounding) Gianfia																																			
A1970	Backfill & Restore Site Gianfia	2.0d	0%	26-Feb-26	02-Mar-26	Backfill & Restore Site Gianfia																																			
A1980	Demobilize Gianfia	1.0d	0%	02-Mar-26	03-Mar-26	Demobilize Gianfia																																			
A1270	Transport & Install Bank 126 To Monsey + Outage Line 601/602 Delta Star - Bay Crane	1.0d	0%	09-Mar-26	10-Mar-26	Transport & Install Bank 126 To Monsey + Outage Line 601/602 Delta Star - Bay Crane																																			
<b>Gianfia Monsey</b>						24-Feb-26, Gianfia Monsey																																			
A2260	Install Conduit @ Containment	3.0d	66.67%	12-Feb-26 A	16-Feb-26	Install Conduit @ Containment																																			
A2290	Backfill Exterior of Contain. & Firewall Found.	3.0d	33.33%	13-Feb-26 A	17-Feb-26	Backfill Exterior of Contain. & Firewall Found.																																			
A2280	Install Grounding	3.0d	0%	16-Feb-26	18-Feb-26	Install Grounding																																			
A2300	Install Containment Liner	4.0d	0%	17-Feb-26	20-Feb-26	Install Containment Liner																																			
A2310	Place Stone Inside Containment	3.0d	0%	20-Feb-26	24-Feb-26	Place Stone Inside Containment																																			
<b>Ramapo Substation Delta Star - Bay Crane</b>						17-Mar-26, Ramapo Substation Delta Star - Bay Crane																																			
A2860	JSA and dew point - Partial disassembly - Oil Drain in to 2 # of tankers	1.0d	0%	03-Mar-26	03-Mar-26	JSA and dew point - Partial disassembly - Oil Drain in to 2 # of tankers																																			
A3030	Delta Star Pre-Testing	2.0d	0%	03-Mar-26	04-Mar-26	Delta Star Pre-Testing																																			
A2870	JSA - Partial disassembly and test core ground - Oil Transport	1.0d	0%	04-Mar-26	04-Mar-26	JSA - Partial disassembly and test core ground - Oil Transport																																			
A2880	Bay Crane: Unit to be Shipped to Monsey Sub - Delta Star Crew to Stand by During the Relocation	2.0d	0%	05-Mar-26	06-Mar-26	Bay Crane: Unit to be Shipped to Monsey Sub - Delta Star Crew to Stand by During the Relocation																																			
A2890	Monsey Substation - JSA and Dew Point Measurement - Install Bushings and Arresters	1.0d	0%	07-Mar-26	07-Mar-26	Monsey Substation - JSA and Dew Point Measurement - Install Bushings and Arresters																																			
A2900	JSA - Install Radiators	1.0d	0%	09-Mar-26	09-Mar-26	JSA - Install Radiators																																			
A2910	JSA - Install Radiators Continuation	1.0d	0%	10-Mar-26	10-Mar-26	JSA - Install Radiators Continuation																																			
A2920	JSA - Oil fill and being cold trap vac oil circulation	1.0d	0%	11-Mar-26	11-Mar-26	JSA - Oil fill and being cold trap vac oil circulation																																			
A2930	JSA - Cold trap vac oil circulation	1.0d	0%	12-Mar-26	12-Mar-26	JSA - Cold trap vac oil circulation																																			
A2940	JSA - Cold trap vac oil circulation Continuation	1.0d	0%	12-Mar-26	12-Mar-26	JSA - Cold trap vac oil circulation Continuation																																			
A2950	JSA - Drain oil and pull vacuum for 12 hour	1.0d	0%	13-Mar-26	13-Mar-26	JSA - Drain oil and pull vacuum for 12 hour																																			
A2960	JSA - Final vac oil filling - Post test -non doble/ insulation test such as TTR and CT Test	1.0d	0%	14-Mar-26	14-Mar-26	JSA - Final vac oil filling - Post test -non doble/ insulation test such as TTR and CT Test																																			
A2970	JSA - Post test	1.0d	0%	15-Mar-26	15-Mar-26	JSA - Post test																																			
A2980	JSA - Post test and make up day	1.0d	0%	16-Mar-26	16-Mar-26	JSA - Post test and make up day																																			
A2990	JSA - Make Up Day	1.0d	0%	17-Mar-26	17-Mar-26	JSA - Make Up Day																																			
<b>Bus Duct Install and SSO</b>						22-Apr-26, Bus Duct Install and SSO																																			
XXXS10	Run new Cables to Bank 126 - Plus Testing for SSO and Relays	4.0d	0%	17-Mar-26	21-Mar-26	Run new Cables to Bank 126 - Plus Testing for SSO and Relays																																			
XXXS10	SSO Install Bus Duct and Conductor Taps to transformer - High Pot - Trip Test - Trip Checks	4.0d	0%	23-Mar-26	26-Mar-26	SSO Install Bus Duct and Conductor Taps to transformer - High Pot - Trip Test - Trip Checks																																			
XXXS10	24 Hour Transformer Soak	1.0d	0%	27-Mar-26	27-Mar-26	24 Hour Transformer Soak																																			
XXXS10	Restore Transformer to System	0.0d	0%		28-Mar-26	Restore Transformer to System																																			
A2250	Firewall CMU	9.0d	0%	30-Mar-26	09-Apr-26	Firewall CMU																																			
A2350	Install CMU @ Containment	5.0d	0%	10-Apr-26	16-Apr-26	Install CMU @ Containment																																			
A2360	Install Stone Surfacing	4.0d	0%	17-Apr-26	22-Apr-26	Install Stone Surfacing																																			
<b>Phase 2</b>						01-Mar-27, Phase 2																																			
A1590	Construction Start	0.0d	0%	01-Oct-26*		Construction Start																																			
A1650	Substations: Disconnect Bus Duct/Control Wiring	24.0d	0%	01-Oct-26	24-Oct-26	Substations: Disconnect Bus Duct/Control Wiring																																			
A1660	Processing Company: Drain Oil Of Transformer 144 And Dismantal And Transported To Ramapo	24.0d	0%	01-Oct-26	24-Oct-26	Processing Company: Drain Oil Of Transformer 144 And Dismantal And Transported To Ramapo																																			
A1670	Remove bank 244 at Monsey (Rigger Required)	24.0d	0%	01-Oct-26	24-Oct-26	Remove bank 244 at Monsey (Rigger Required)																																			
A1680	Reconstruct Transformer Ramapo	24.0d	0%	01-Oct-26	24-Oct-26	Reconstruct Transformer Ramapo																																			
A2380	Project Start - BANK 244	0.0d	0%	01-Oct-26	01-Oct-26	Project Start - BANK 244																																			
A1690	Demolition & Excavation Tranf. Pad & fire Wall)	20.0d	0%	24-Oct-26	12-Nov-26	Demolition & Excavation Tranf. Pad & fire Wall)																																			
A1700	Form, Rebar & Pour Concrete Transformer Pad, Perimeter Walls	13.0d	0%	15-Nov-26	27-Nov-26	Form, Rebar & Pour Concrete Transformer Pad, Perimeter Walls																																			
A1990	Form, Rebar & Pour Concrete Fire Wall	5.0d	0%	30-Nov-26	04-Dec-26	Form, Rebar & Pour Concrete Fire Wall																																			
A2000	Furnish & Install Masonry	15.0d	0%	07-Dec-26	25-Dec-26	Furnish & Install Masonry																																			
A2010	Furnish & Install Secondary Oil Containment System	4.0d	0%	28-Dec-26	31-Dec-26	Furnish & Install Secondary Oil Containment System																																			
A2020	Furnish & Install ( Conduits & Grounding)	5.0d	0%	01-Jan-27	07-Jan-27	Furnish & Install ( Conduits & Grounding)																																			
A2030	Backfill & Restore Site	2.0d	0%	08-Jan-27	11-Jan-27	Backfill & Restore Site																																			
A2040	Demobilize	1.0d	0%	12-Jan-27	12-Jan-27	Demobilize																																			
A1730	Transport & Install Bank 226 To Monsey	6.0d	0%	13-Jan-27	18-Jan-27	Transport & Install Bank 226 To Monsey																																			

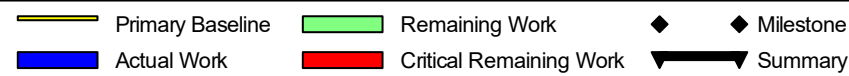
— Primary Baseline   
 ■ Remaining Work   
 ◆ Milestone   
 ■ Actual Work   
 ■ Critical Remaining Work   
 ▶ Summary



Activity ID	Activity Name	Original Duration	Duration % Complete	Start	Finish	2026												2027											
						Feb	Mar	Apr	May	Jun	Jul	Aug	Sep	Oct	Nov	Dec	Jan	Feb	Mar	Apr	May	Jun	Jul	Aug	Sep	Oct	Nov	Dec	
<b>Lines 551-702 and 562 Shield Wire and Pole Replacements, NYS Thruway Crossing</b>		314.0d	23.89%	03-Nov-25 A	14-Jan-27	14-Jan-27, Lines 551-702 and 562 Shield Wire and Pole Replacements, NYS Thruway Crossing																							
<b>Construction</b>		0.0d	0%	16-Feb-26	16-Feb-26	16-Feb-26, Construction																							
<b>Construction Start</b>		0.0d	0%	16-Feb-26	16-Feb-26	16-Feb-26, Construction Start																							
XXXS800200	Construction Start	0.0d	0%	16-Feb-26*		Construction Start																							
<b>Construction Contractor Foundation</b>		88.0d	0%	16-Feb-26	15-May-26	15-May-26, Construction Contractor Foundation																							
A2420	Mobilization	4.0d	0%	16-Feb-26*	20-Feb-26	Mobilization																							
A2430	Site Work Foundation 1	4.0d	0%	20-Feb-26	24-Feb-26	Site Work Foundation 1																							
A2460	Drilling Foundation 1	2.0d	0%	24-Feb-26	26-Feb-26	Drilling Foundation 1																							
A2630	Restoration Foundation 1	2.0d	0%	26-Feb-26	28-Feb-26	Restoration Foundation 1																							
A2440	Site Work Foundation 2	4.0d	0%	28-Feb-26	04-Mar-26	Site Work Foundation 2																							
A2500	drilling Foundation 2	2.0d	0%	04-Mar-26	06-Mar-26	drilling Foundation 2																							
A2640	Restoration Foundation 2	2.0d	0%	06-Mar-26	08-Mar-26	Restoration Foundation 2																							
A2470	Site Work Foundation 3	4.0d	0%	08-Mar-26	12-Mar-26	Site Work Foundation 3																							
A2520	Drilling Foundation 3	2.0d	0%	12-Mar-26	14-Mar-26	Drilling Foundation 3																							
A2650	Restoration Foundation 3	1.0d	0%	14-Mar-26	15-Mar-26	Restoration Foundation 3																							
A2770	Site Work Foundation 4	4.0d	0%	15-Mar-26	19-Mar-26	Site Work Foundation 4																							
A2780	Drilling Foundation 4	2.0d	0%	19-Mar-26	21-Mar-26	Drilling Foundation 4																							
A2800	Restoration Foundation 4	2.0d	0%	21-Mar-26	23-Mar-26	Restoration Foundation 4																							
A2890	Site Work Foundation 5	4.0d	0%	23-Mar-26	27-Mar-26	Site Work Foundation 5																							
A2900	Drilling Foundation 5	2.0d	0%	27-Mar-26	29-Mar-26	Drilling Foundation 5																							
A2920	Restoration Foundation 5	2.0d	0%	29-Mar-26	31-Mar-26	Restoration Foundation 5																							
A2930	Site Work Foundation 6	4.0d	0%	31-Mar-26	04-Apr-26	Site Work Foundation 6																							
A2940	Drilling Foundation 6	2.0d	0%	04-Apr-26	06-Apr-26	Drilling Foundation 6																							
A2960	Restoration Foundation 6	2.0d	0%	06-Apr-26	08-Apr-26	Restoration Foundation 6																							
A2970	Site Work Foundation 7	4.0d	0%	08-Apr-26	12-Apr-26	Site Work Foundation 7																							
A2980	Drilling Foundation 7	2.0d	0%	12-Apr-26	14-Apr-26	Drilling Foundation 7																							
A3000	Restoration Foundation 7	2.0d	0%	14-Apr-26	16-Apr-26	Restoration Foundation 7																							
A3010	Site Work Foundation 8	5.0d	0%	16-Apr-26	21-Apr-26	Site Work Foundation 8																							
A3020	Drilling Foundation 8	2.0d	0%	21-Apr-26	23-Apr-26	Drilling Foundation 8																							
A3040	Restoration Foundation 8	2.0d	0%	23-Apr-26	25-Apr-26	Restoration Foundation 8																							
A3230	Demob	1.0d	0%	25-Apr-26	26-Apr-26	Demob																							
A3050	Site Work Foundation 216 - Mobilize again	5.0d	0%	27-Apr-26	02-May-26	Site Work Foundation 216 - Mobilize again																							
A3060	Drilling Foundation 216	2.0d	0%	02-May-26	04-May-26	Drilling Foundation 216																							
A3080	Restoration Foundation 216	2.0d	0%	04-May-26	06-May-26	Restoration Foundation 216																							
A3190	Site Work Foundation 50	5.0d	0%	06-May-26	11-May-26	Site Work Foundation 50																							
A3200	Drilling Foundation 50	2.0d	0%	11-May-26	13-May-26	Drilling Foundation 50																							
A3220	Restoration Foundation 50	2.0d	0%	13-May-26	15-May-26	Restoration Foundation 50																							
<b>Construction Contractor Poles (&amp; Support EHV Contractor)</b>		225.0d	0%	15-Mar-26	26-Oct-26	26-Oct-26, Construction Contractor Poles (& Support EHV Contractor)																							
A2720	Pole first 1 Structure 215 - Bury / Connect Grounding Add Numbers	3.0d	0%	15-Mar-26*	18-Mar-26	Pole first 1 Structure 215 - Bury / Connect Grounding Add Numbers																							
A2710	Set Pole first 215, Place Arms, Transfer Conductor	5.0d	0%	18-Mar-26	23-Mar-26	Set Pole first 215, Place Arms, Transfer Conductor																							
A2740	Pole second 2 Structure 50 - Bury / Connect Grounding Add Numbers	3.0d	0%	23-Mar-26	26-Mar-26	Pole second 2 Structure 50 - Bury / Connect Grounding Add Numbers																							
A2730	Set Pole second 50, Place Arms, Transfer Conductor	5.0d	0%	26-Mar-26	31-Mar-26	Set Pole second 50, Place Arms, Transfer Conductor																							
A2760	Pole third 3 Structure 51 - Bury / Connect Grounding Add Numbers	3.0d	0%	31-Mar-26	03-Apr-26	Pole third 3 Structure 51 - Bury / Connect Grounding Add Numbers																							
A2750	Set Pole third 51, Place Arms, Transfer Conductor	5.0d	0%	03-Apr-26	08-Apr-26	Set Pole third 51, Place Arms, Transfer Conductor																							
A2850	Pole fourth 4 Structure 49 - Bury / Connect Grounding Add Numbers	3.0d	0%	08-Apr-26	11-Apr-26	Pole fourth 4 Structure 49 - Bury / Connect Grounding Add Numbers																							
A2860	Set Pole fourth 49, Place Arms, Transfer Conductor	5.0d	0%	11-Apr-26	16-Apr-26	Set Pole fourth 49, Place Arms, Transfer Conductor																							
A3090	Pole fifth 5 Structure 48 - Bury / Connect Grounding Add Numbers	3.0d	0%	16-Apr-26	19-Apr-26	Pole fifth 5 Structure 48 - Bury / Connect Grounding Add Numbers																							
A3100	Set Pole fifth 48, Place Arms, Transfer Conductor	5.0d	0%	19-Apr-26	24-Apr-26	Set Pole fifth 48, Place Arms, Transfer Conductor																							
A3110	Pole sixth 216 - Bury / Connect Grounding Add Numbers	3.0d	0%	24-Apr-26	27-Apr-26	Pole sixth 216 - Bury / Connect Grounding Add Numbers																							
A3120	Set Pole sixth 216, Place Arms, Transfer Conductor	5.0d	0%	27-Apr-26	02-May-26	Set Pole sixth 216, Place Arms, Transfer Conductor																							
A3130	Pole seventh 220 - Bury / Connect Grounding Add Numbers	3.0d	0%	29-Sep-26	02-Oct-26	Pole seventh 220 - Bury / Connect Grounding Add Numbers																							
A3140	Set Pole seventh 220, Place Arms, Transfer Conductor	5.0d	0%	02-Oct-26	07-Oct-26	Set Pole seventh 220, Place Arms, Transfer Conductor																							
A3150	Pole eighth 52 - Bury / Connect Grounding Add Numbers	2.0d	0%	07-Oct-26	09-Oct-26	Pole eighth 52 - Bury / Connect Grounding Add Numbers																							
A3160	Set Pole eighth 52, Place Arms, Transfer Conductor	5.0d	0%	09-Oct-26	14-Oct-26	Set Pole eighth 52, Place Arms, Transfer Conductor																							
A3170	Pole ninth 219 - Bury / Connect Grounding Add Numbers	2.0d	0%	12-Oct-26	14-Oct-26	Pole ninth 219 - Bury / Connect Grounding Add Numbers																							

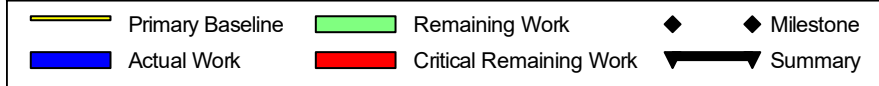
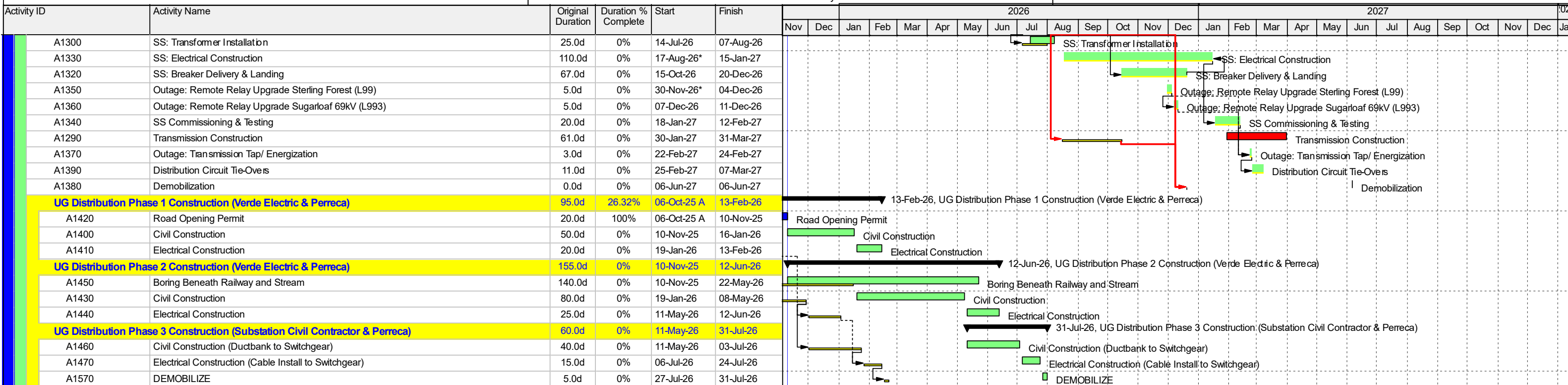
— Primary Baseline   
 ■ Remaining Work   
 ◆ Milestone   
 ■ Actual Work   
 ■ Critical Remaining Work   
  Summary

Activity ID	Activity Name	Original Duration	Duration % Complete	Start	Finish	2026												2027												028
						Feb	Mar	Apr	May	Jun	Jul	Aug	Sep	Oct	Nov	Dec	Jan	Feb	Mar	Apr	May	Jun	Jul	Aug	Sep	Oct	Nov	Dec	Jan	
A3180	Set Pole ninth 219, Place Arms, Transfer Conductor	5.0d	0%	14-Oct-26	19-Oct-26																									
A3240	Pole Tenth 53 -Bury / Connect Grounding Add Numbers	2.0d	0%	19-Oct-26	21-Oct-26																									
A3250	Set Pole Tenth 53, Place Arms, Transfer Conductor	5.0d	0%	21-Oct-26	26-Oct-26																									
<b>Outage</b>		<b>54.0d</b>	<b>0%</b>	<b>16-Feb-26</b>	<b>30-Apr-26</b>																									
A3350	Line 702 NY Thruway Crossing Outage	40.0d	0%	16-Feb-26	10-Apr-26																									
A1090	Line 551 NY Thruway Crossing Outage	40.0d	0%	02-Mar-26	24-Apr-26																									
A3340	Line 562 NY Thruway Crossing Outage	44.0d	0%	02-Mar-26	30-Apr-26																									
<b>ROW Non Outage</b>		<b>80.0d</b>	<b>87.5%</b>	<b>03-Nov-25 A</b>	<b>27-Feb-26</b>																									
A1100	551/702/562 Right Of Way Non-Outage	80.0d	87.5%	03-Nov-25 A	27-Feb-26																									
<b>Project Closeout</b>		<b>59.0d</b>	<b>0%</b>	<b>26-Oct-26</b>	<b>14-Jan-27</b>																									
_WXXCLOSE	Project Closeout	59.0d	0%	26-Oct-26	14-Jan-27																									
XXXS890100	As Built Drawing Complete	40.0d	0%	26-Oct-26	18-Dec-26																									
XXXS890110	Operation Manual Complete	40.0d	0%	26-Oct-26	18-Dec-26																									
XXXS890200	Complete Project Close-Out	59.0d	0%	26-Oct-26	14-Jan-27																									
XXXS890220	Handoff to Operations	4.0d	0%	11-Jan-27	14-Jan-27																									
XXXS890210	Notification to Close Project/Budget No	4.0d	0%	11-Jan-27	14-Jan-27																									
XXXS999999	Project Complete	0.0d	0%		14-Jan-27																									



Activity ID	Activity Name	Original Duration	Duration % Complete	Start	Finish	2026												2027															
						Nov	Dec	Jan	Feb	Mar	Apr	May	Jun	Jul	Aug	Sep	Oct	Nov	Dec	Jan	Feb	Mar	Apr	May	Jun	Jul	Aug	Sep	Oct	Nov	Dec	Jan	
<b>State School Road</b>		682.0d	39.88%	24-Oct-24 A	06-Jun-27	06-Jun-27, State School Road																											
<b>Permitting</b>		90.0d	100%	25-Jun-25 A	10-Nov-25	10-Nov-25, Permitting																											
A1090	Obtain Permitting	90.0d	100%	25-Jun-25 A	10-Nov-25	Obtain Permitting																											
<b>Procurement</b>		562.0d	48.4%	24-Oct-24 A	20-Dec-26	20-Dec-26, Procurement																											
A1220	Switchgear PO - Delivery	497.0d	66.8%	24-Oct-24 A	26-Jun-26	Switchgear PO - Delivery																											
A1230	Steel Procurement	315.0d	26.98%	14-Jul-25 A	25-Sep-26	Steel Procurement																											
A1240	Transmission Cable & Hardware Procurement	186.0d	45.7%	14-Jul-25 A	30-Mar-26	Transmission Cable & Hardware Procurement																											
A1210	Transformer Delivery to Storage	241.0d	26.97%	11-Aug-25 A	13-Jul-26	Transformer Delivery to Storage																											
A1250	Remote Relay Procurement	130.0d	50%	11-Aug-25 A	06-Feb-26	Remote Relay Procurement																											
A1180	Issue Construction PO	7.0d	100%	22-Sep-25 A	10-Nov-25	Issue Construction PO																											
A1190	Issue Construction NTP	3.0d	0%	10-Nov-25	12-Nov-25	Issue Construction NTP																											
A1225	Vacuum Breaker Delivery	67.0d	0%	15-Oct-26*	20-Dec-26	20-Oct-26, Electrical Construction Vacuum Breaker Delivery																											
<b>Electrical Construction</b>		60.0d	0%	29-Jul-26	20-Oct-26	20-Oct-26, Electrical Construction																											
A1580	Install Electrical Equipment - (Switchgear, Transformer and Circuit Breaker)	40.0d	0%	29-Jul-26	22-Sep-26	Install Electrical Equipment - (Switchgear, Transformer and Circuit Breaker)																											
A1650	Erect Substation Steel Structures	20.0d	0%	01-Sep-26*	28-Sep-26	Erect Substation Steel Structures																											
A1640	Erect Transmission Steel Structures	20.0d	0%	23-Sep-26	20-Oct-26	Erect Transmission Steel Structures																											
<b>Civil Construction</b>		307.0d	0%	05-Jan-26	09-Mar-27	09-Mar-27, Civil Construction																											
A1260	Mobilization	5.0d	0%	02-Mar-26*	06-Mar-26	Mobilization																											
A1600	Earth Work	80.0d	0%	09-Mar-26	26-Jun-26	Earth Work																											
A1630	Install Transformer Oil Containment	15.0d	0%	08-Jun-26	26-Jun-26	Install Transformer Oil Containment																											
A1610	Install Electrical Underground Conduits	10.0d	0%	15-Jun-26	26-Jun-26	Install Electrical Underground Conduits																											
A1620	Install Ground Ring	5.0d	0%	22-Jun-26	26-Jun-26	Install Ground Ring																											
A1590	Civil Concrete Foundation Pour	20.0d	0%	01-Jul-26*	28-Jul-26	Civil Concrete Foundation Pour																											
<b>138-69/13.2 kV State School Substation-Warwick NY</b>		307.0d	0%	05-Jan-26	09-Mar-27	09-Mar-27, 138-69/13.2 kV State School Substation-Warwick NY																											
A1660	Site Survey	10.0d	0%	05-Jan-26*	16-Jan-26	Site Survey																											
A1670	ROW Clearing & Access	20.0d	0%	05-Jan-26	30-Jan-26	ROW Clearing & Access																											
A1680	Soil Erosion & Sediment Control Measures	30.0d	0%	05-Jan-26	13-Feb-26	Soil Erosion & Sediment Control Measures																											
A1690	Retaining Wall Installation	55.0d	0%	19-Jan-26	03-Apr-26	Retaining Wall Installation																											
A1700	T-Line Foundation Installation	70.0d	0%	16-Feb-26	22-May-26	T-Line Foundation Installation																											
A1710	Stormwater Remediation	20.0d	0%	23-Mar-26	17-Apr-26	Stormwater Remediation																											
A1720	Substation Earthwork & Grading	41.0d	0%	06-Apr-26	01-Jun-26	Substation Earthwork & Grading																											
A1730	UG Distribution Duct Bank Installation	143.0d	0%	27-Apr-26	11-Nov-26	UG Distribution Duct Bank Installation																											
A1740	T-Line Structure Installation	11.0d	0%	18-May-26	01-Jun-26	T-Line Structure Installation																											
A1750	Substation Foundation Installation (Including Cure)	122.0d	0%	26-May-26	11-Nov-26	Substation Foundation Installation (Including Cure)																											
A1760	T-Line Structure Removals	11.0d	0%	30-Jun-26	14-Jul-26	T-Line Structure Removals																											
A1770	Matting & Access Removals	45.0d	0%	15-Jul-26	15-Sep-26	Matting & Access Removals																											
A1780	Ground Grid Installation	55.0d	0%	10-Sep-26	25-Nov-26	Ground Grid Installation																											
A1790	Fencing & Site Security	30.0d	0%	01-Oct-26	11-Nov-26	Fencing & Site Security																											
A1800	UG Conduit and Cable Trench (Within Substation)	52.0d	0%	01-Oct-26	11-Dec-26	UG Conduit and Cable Trench (Within Substation)																											
A1810	Installation of Structures	40.0d	0%	01-Oct-26	25-Nov-26	Installation of Structures																											
A1820	Equipment Setting	40.0d	0%	01-Oct-26	25-Nov-26	Equipment Setting																											
A1830	Bus Installation	59.0d	0%	22-Oct-26	12-Jan-27	Bus Installation																											
A1840	Cable Pulls	42.0d	0%	22-Oct-26	18-Dec-26	Cable Pulls																											
A1850	Foundations Ready to Accept Equipment	0.0d	0%	12-Nov-26		Foundations Ready to Accept Equipment																											
A1860	Terminations	59.0d	0%	12-Nov-26	02-Feb-27	Terminations																											
A1870	Testing & Commissioning	57.0d	0%	07-Dec-26	23-Feb-27	Testing & Commissioning																											
A1880	Site Restoration & Punch List Completion	40.0d	0%	13-Jan-27	09-Mar-27	Site Restoration & Punch List Completion																											
A1890	Landscaping	20.0d	0%	10-Feb-27	09-Mar-27	Landscaping																											
A1900	Energization of Substation	0.0d	0%		23-Feb-27	Energization of Substation																											
A1910	Construction Completion	0.0d	0%		09-Mar-27	Construction Completion																											
<b>Construction</b>		435.0d	5.75%	06-Oct-25 A	06-Jun-27	06-Jun-27, Construction																											
A1270	Civil Construction - SS Yard	315.0d	0%	06-Mar-26	15-Jan-27	Civil Construction - SS Yard																											
A1280	Civil Construction - Transmission Structures	329.0d	0%	07-Mar-26	29-Jan-27	Civil Construction - Transmission Structures																											
A1310	SS: Switchgear Delivery & Landing	5.0d	0%	29-Jun-26	03-Jul-26	SS: Switchgear Delivery & Landing																											





Activity ID	Activity Name	Start	Finish	2021				2022				2023				2024				2025				2026				2027				2028				2029
				Q2	Q3	Q4	Q1	Q2	Q3	Q4	Q1	Q2	Q3	Q4	Q1	Q2	Q3	Q4	Q1	Q2	Q3	Q4	Q1	Q2	Q3	Q4	Q1	Q2	Q3	Q4	Q1	Q2	Q3	Q4	Q1	
<b>Total</b>		30-Jun-2021	01-Jul-2027	01-Jul-2027, Total																																
<b>TL 705</b>		30-Jun-2021	01-Jul-2027	01-Jul-2027, TL 705																																
<b>Article VII Application</b>		30-Jun-2021	30-Jun-2021	30-Jun-2021, Article VII Application																																
A1000	Remainder of Application	30-Jun-2021	30-Jun-2021																																	
<b>Permitting</b>		01-Jul-2021	27-Jun-2023	27-Jun-2023, Permitting																																
A1010	Article VII Review	01-Jul-2021	28-Dec-2022																																	
A1020	Environmental Permitting Review	29-Dec-2022	27-Jun-2023																																	
<b>Procurement</b>		28-Jul-2023	05-Sep-2024	05-Sep-2024, Procurement																																
A1030	UG Cable	28-Jul-2023*	05-Sep-2024																																	
<b>Construction - Transmission Line</b>		18-Aug-2022	26-Jan-2027	26-Jan-2027, Construction - Transmission Line																																
A1040	Construction Procurement	18-Aug-2022*	27-Sep-2023																																	
A1050	Construction	28-Sep-2023	28-Feb-2025																																	
A1060	Underground Construction	30-Oct-2023*	26-Jan-2027																																	
A1070	Electrical Construction	07-Jul-2025*	31-Dec-2026																																	
A1090	Energization (In Service)	31-Dec-2026	31-Dec-2026																																	
<b>Close Out</b>		01-Jan-2027	01-Jul-2027	01-Jul-2027, Close Out																																

Orange and Rockland Utilities, Inc.  
Gas Rate Case 24-G-0061  
Gas Rate Case - Twelve Month Update  
Capital Expenditures  
Twelve Months Ending December 31, 2025 Rate Year 1

Twelve Months Ending December 31, 2025  
Rate Year 1

<u>Project Description</u>	<u>Asset Class</u>	<u>Rate Agreement</u>	<u>Actual</u>	<u>Variance</u>
Blankets		\$ 84,822.8	\$ 103,366.4	\$ (18,543.6)
Regular Projects Under \$500K		\$ 468.2	\$ 2,709.6	\$ (2,241.5)
Regular Projects Over \$500K		\$ 6,036.0	\$ 6,064.3	\$ (28.3)
Data Governance & Innovation	Software	616.0	605.9	10.1
	<b>Total Software</b>	<b>616.0</b>	<b>605.9</b>	<b>10.1</b>
Gas Control SCADA Upgrade and Display Upgrade	Distribution	544.5	(229.4)	773.9
Gas OMS	Distribution	600.0	-	600.0
KJ Reliability Contingency	Distribution	2,000.0	-	2,000.0
MR-BS Orangeburg Upgrade	Distribution	752.6	-	752.6
Ultrasonic Meter & Supermonitor Program	Distribution	500.0	-	500.0
Vayoel Moshe Gardens Nininger Rd Phase 2 Gas	Distribution	864.9	-	864.9
Vayoel Moshe Gardens- Phase 1	Distribution	157.9	6.6	151.3
Tappan Gate Station Pipeline Integrity Upgrade	Distribution	-	4,304.2	(4,304.2)
Middletown ROV	Distribution	-	778.9	(778.9)
Upgrade Crooked Hill Reg Station (Laurel Road)	Distribution	-	598.0	(598.0)
	<b>Total Distribution</b>	<b>5,420.0</b>	<b>5,458.4</b>	<b>(38.4)</b>
		\$ 6,036.0	\$ 6,064.3	\$ (28.3)
<b>Subtotal Regular Projects Over \$500K</b>		\$ 6,036.0	\$ 6,064.3	\$ (28.3)
<b>Total</b>		<b>\$ 91,327.0</b>	<b>\$ 112,140.3</b>	<b>\$ (20,813.3)</b>

Orange and Rockland Utilities, Inc.  
 Gas Rate Case 24-G-0061  
 Gas Plant Additions  
 Twelve Months Ending December 31, 2025

<u>Project Description</u>	<u>Asset Class</u>	<u>Twelve Months</u>		
		<u>Rate Agreement</u>	<u>Actual</u>	<u>Variance</u>
Blankets and Other Projects Under \$500k		84,941.6	86,107.9	(1,166.3)
<b>Regular Projects Over \$500k</b>		<b>1,989.9</b>	<b>5,388.5</b>	<b>(3,398.6)</b>
AMI Program - Gas	Distributio	-	994.6	(994.6)
Gas Control SCADA Upgrade and Display Upgrade	Intangible	-	742.8	(742.8)
Gas OMS	Distributio	1,989.9	-	1,989.9
GMD-GIS Periodic Meter Change Program Enhancement	Intangible	-	568.9	(568.9)
Locus View	Intangible	-	3,082.2	(3,082.2)
		-	-	-
		1,989.9	5,388.5	(3,398.6)
<b>Total</b>		\$ 86,931.5	\$ 91,496.4	\$ (4,564.9)

Orange and Rockland Utilities, Inc.  
 Gas Rate Case 24-G-0061  
 Gas Rate Case - Twelve Month Update  
 Detail Breakdown - Projects Over \$0.5 Million  
 Twelve Months Ending December 31, 2025 Rate Year 1

Twelve Months Ending December 31, 2025  
Rate Year 1

Project Description	Project Start	Rate Case in	Projected Actual in Service	Labor	Accounts				Total \$	Remarks
	Date	Service Date	Date		Payable	Materials	Overheads	Other		
Data Governance & Innovation	Jan 2025	Dec 2027	Dec 2027	109.3	415.0	-	81.6	-	\$ 605.9	
Gas Control SCADA Upgrade and Display Upgrade	Jan 2025	Dec 2028	Dec 2028	-	728.2	(1,049.0)	(8.7)	100.1	\$ (229.4)	
Gas OMS	Jun 2023	Dec 2025	Dec 2025	-	-	-	-	-	\$ -	
KJ Reliability Contingency	Jan 2025	Dec 2026	Dec 2027	-	-	-	-	-	\$ -	Construction scheduled to be completed by December 2027.
MR-BS Orangeburg Upgrade	Jan 2025	Dec 2028	Dec 2028	-	-	-	-	-	\$ -	
Ultrasonic Meter & Supermonitor Program	Jan 2025	Dec 2029	Dec 2029	-	-	-	-	-	\$ -	On going program
Vayoel Moshe Gardens Nininger Rd Phase 2 Gas	Jan 2023	Dec 2028	Dec 2028	-	-	-	-	-	\$ -	
Vayoel Moshe Gardens- Phase 1	Mar 2021	Dec 2028	Dec 2028	1.4	-	-	5.2	-	\$ 6.6	
Tappan Gate Station Pipeline Integrity Upgrade	Jan 2022		Dec 2025	172.7	1,164.0	564.6	240.3	2,162.6	\$ 4,304.2	Part of the ongoing Pipeline Integrity Gate Station Upgrade program.
Middletown ROV				140.7	453.8	124.1	58.9	1.4	\$ 778.9	
Upgrade Crooked Hill Reg Station (Laurel Road)				5.1	427.5	107.1	30.2	28.2	\$ 598.1	
<b>Total</b>				<b>\$ 429.2</b>	<b>\$ 3,188.5</b>	<b>\$ (253.2)</b>	<b>\$ 407.5</b>	<b>\$ 2,292.3</b>	<b>\$ 6,064.3</b>	

Orange and Rockland Utilities, Inc.

Gas Rate Case 24-G-0061

NY Gas Rate Case - Projected Capital Expenditures for Total Projects

Total Estimate and Spending Summary - Projects Over \$0.5 Million

Twelve Months Ending December 31, 2025 Rate Year 1

<u>Project Description</u>	<u>Original Estimate</u>	<u>Current Estimate</u>	<u>Delta from original Estimate</u>	<u>Delta percent from original Estimate</u>	<u>Reason for difference</u>	<u>Project Spending 12/31/2025</u>
Data Governance & Innovation	\$ 2,050.0	\$ 2,050.0	\$ (0.0)	0%		\$ 626.0
Gas Control SCADA Upgrade and Display Upgrade	\$ 2,001.4	\$ 2,001.4	\$ 0.0	0%		\$ 1,227.9
Gas OMS	\$ 600.0	\$ 600.0	\$ 0.0	0%		\$ -
KJ Reliability Contingency	\$ 7,500.0	\$ 7,500.0	\$ (0.0)	0%		\$ -
MR-BS Orangeburg Upgrade	\$ 902.2	\$ 902.2	\$ 0.0	0%		\$ -
Ultrasonic Meter & Supermonitor Program	\$ 1,500.0	\$ 1,500.0	\$ 0.0	0%		\$ -

Orange and Rockland Utilities, Inc.

The fourth quarter 2025 R&D expenditures are detailed in the table below.

<u>R&amp;D Category</u>	<u>Q4-2025 Expenditures</u>
Damage Prevention	\$0
Plastic Piping Quality	\$28,087.79
Inside Leak Detection	\$0
Outside Leak Detection	\$ 0
Pipeline Integrity	\$102,385.03
Operations/Safety	\$16,082.97
Non-Pipeline Solutions	\$22,510.05
<b>TOTAL</b>	<b>\$169,065.84</b>

Orange and Rockland Utilities, Inc.  
Electric Rate Case E-24-0060  
NY Common Rate Case - Twelve Month Update  
Capital Expenditures  
Twelve Months Ending December 31, 2025 Rate Year 1

Twelve Months Ending December 31, 2025

Rate Year 1

<u>Project Description</u>	<u>Asset Class</u>	<u>Rate Agreement</u>	<u>Actual</u>	<u>Variance</u>
Blankets		\$ 23,598.9	\$ 30,957.3	\$ (7,358.4)
Regular Projects Under \$500K		\$ 101.4	\$ 7,280.8	\$ (7,179.4)
Regular Projects Over \$500K		\$ 65,117.8	\$ 63,688.2	\$ 1,429.6
AMI ORU/CECONY Synch work	AMI-Capitalized Software	837.3	-	837.3
	<b>Total AMI-Capitalized Software</b>	<b>837.3</b>	<b>-</b>	<b>837.3</b>
SVOC Addition	Office Buildings	6,000.0	3,449.6	2,550.4
Clean Energy Buildings	Office Buildings	1,500.0	-	1,500.0
Blooming Grove Auditorium Building Improvements	Office Buildings	300.0	-	300.0
	<b>Total Office Buildings</b>	<b>7,800.1</b>	<b>3,449.6</b>	<b>4,350.5</b>
Facilities Upgrades (SV and BG)	General Equipment	289.3	-	289.3
ORU EV Charging Infrastructure	General Equipment	440.6	2,826.3	(2,385.6)
ORU EV Charging Infrastructure	General Equipment	2,067.0	-	2,067.0
Enhanced Perimeter Security Plan	General Equipment	1,234.0	3,806.3	(2,572.3)
	<b>Total General Equipment</b>	<b>4,031.0</b>	<b>6,632.5</b>	<b>(2,601.5)</b>
Budget System Software Enhancements	Software	112.9	-	112.9
CC&B Enhancements	Software	566.0	1,987.5	(1,421.5)
Customer Analytics Reporting and Engagement Program C/	Software	3,054.0	2,148.4	905.6
Customer Data Sharing ORU	Software	175.0	74.3	100.7
Data Governance Program ORU	Software	163.3	185.0	(21.6)
Data Integration Modernization ORU	Software	199.5	160.9	38.6
End User Computing ORU	Software	430.5	-	430.5
Fraud Data Analytics Platform (ORU)	Software	119.0	51.2	67.8
Geographic Information System (Mapping)	Software	16,059.0	5,756.0	10,303.0
IT System Testing COE ORU	Software	181.0	358.0	(177.0)
L&I Digital Learning Transformation Or	Software	43.4	33.2	10.2
Mainframe Data Retention and Archival	Software	1,077.0	-	1,077.0
New Business Training Program	Software	550.0	-	550.0
Nucon Replacement	Software	4,000.0	1,258.4	2,741.6
O&R AMI Analytics	Software	1,990.0	2,079.9	(89.9)
O&R Retail Access System Replacement from CECONY	Software	1,573.3	727.3	846.0
O&R_Project Management Software	Software	140.0	65.6	74.4
Oracle Analytical Systems Platform	Software	2,050.0	2,115.8	(65.8)
Technology Modernization	Software	2,065.5	-	2,065.5
Telephone System Migration	Software	3,500.0	2,613.3	886.7
WMS Replacement Project	Software	14,400.0	27,171.7	(12,771.7)
CECONY IR Shared Service Clearing Affiliate Billing	Software	-	673.4	(673.4)
Credit and Collections Tools and Dashboard Development	Software	-	2,609.0	(2,609.0)
Technology Currency and Sustainability ORU	Software	-	484.1	(484.1)
OMS Enhancements Project	Software	-	2,160.2	(2,160.2)
Mainframe Data Retention and Archival Project	Software	-	893.0	(893.0)
	<b>Total Software</b>	<b>52,449.5</b>	<b>53,606.1</b>	<b>(1,156.6)</b>
<b>Subtotal Regular Projects Over \$500K</b>		<b>65,117.8</b>	<b>63,688.2</b>	<b>1,429.6</b>
<b>Total</b>		<b>\$ 88,818.0</b>	<b>\$ 101,926.2</b>	<b>\$ (13,108.2)</b>



Orange and Rockland Utilities, Inc.  
Electric Rate Case E-24-0060  
Common Plant Additions  
Twelve Months Ending December 31, 2025

<u>Project Description</u>	<u>Asset Class</u>	<u>Twelve Months</u>		
		<u>Rate Agreement</u>	<u>Actual</u>	<u>Variance</u>
Blankets and Other Projects Under \$500k		25,028.9	14,506.1	10,522.8
<b>Regular Projects Over \$500k</b>		<b>4,050.0</b>	<b>21,202.0</b>	<b>(17,152.0)</b>
CC&B Enhancements	Intangible	-	1,840.1	(1,840.1)
CDG Salesforce Portal	Intangible	-	1,059.7	(1,059.7)
Communication HUB Sites	General Equipment	-	588.2	(588.2)
Credit & Collections Tools & Dashboard	Intangible	-	2,374.3	(2,374.3)
Data Governance Program	Intangible	-	692.5	(692.5)
EV Charging Infrastructure	General Equipment	-	2,815.0	(2,815.0)
Mainframe Data Retention and Archival	Computers	-	1,231.4	(1,231.4)
Main Frame Elimination	Intangible	-	796.4	(796.4)
Microsoft 365 ES	Intangible	-	3,315.3	(3,315.3)
New Business Training Program	Intangible	550.0	-	550.0
Operational Technology Infrastructure	General Equipment	-	1,136.6	(1,136.6)
Privacy Readiness Program	Intangible	-	828.2	(828.2)
Project Management Software	Intangible	-	1,235.1	(1,235.1)
RB-20 Bantam Test Kits	General Equipment	-	704.6	(704.6)
Real Estate Optimization	Office Buildings	-	2,584.6	(2,584.6)
Telephone System Migration	General Equipment	3,500.0	-	3,500.0
		<b>4,050.0</b>	<b>21,202.0</b>	<b>(17,152.0)</b>
<b>Total</b>		<b>\$ 29,078.9</b>	<b>\$ 35,708.1</b>	<b>\$ (6,629.2)</b>

Orange and Rockland Utilities, Inc.  
 Electric Rate Case E-24-0060  
 NY Common Rate Case - Twelve Month Update  
 Detail Breakdown - Projects Over \$0.5 Million  
 Twelve Months Ending December 31, 2025 Rate Year 1

**Twelve Months Ending December 31, 2025**  
**Rate Year 1**

<u>Project Description</u>	<u>Project Start Date</u>	<u>Rate Case in Service Date</u>	<u>Projected Actual in Service Date</u>	<u>Labor</u>	<u>Accounts Payable</u>	<u>Materials</u>	<u>Overheads</u>	<u>Other</u>	<u>Total \$</u>	<u>Remarks</u>
AMI ORU/CECONY Synch work		Dec 2026	Dec 2026	-	-	-	-	-	\$ -	
Budget System Software Enhancements	Dec-2016	Dec 2028	Dec 2028	-	-	-	-	-	\$ -	
CC&B Enhancements	Jun 2024	Dec 2027	Dec 2030	148.0	-	-	110.3	1,729.2	\$ 1,987.5	Will be placed in services each year over time
Customer Analytics Reporting and Engagement Program CARE	May 2025	Dec 2028	Dec 2028	29.6	2,042.3	-	63.3	13.2	\$ 2,148.4	Will be placed in services each year over time
Customer Data Sharing ORU	Jan-2023	Dec 2026	Dec 2026	-	-	-	2.8	71.5	\$ 74.3	
Data Governance Program ORU	Feb-2023	Dec 2026	Dec 2026	-	-	-	8.3	176.7	\$ 185.0	
Data Integration Modernization ORU	Aug-2022	Dec 2026	Dec 2026	-	-	-	33.3	127.6	\$ 160.9	
End User Computing ORU	Jan-2023	Dec 2027	Dec 2027	-	-	-	-	-	\$ -	
Facilities Upgrades (SV and BG)		Dec 2027	Dec 2027	-	-	-	-	-	\$ -	
Fraud Data Analytics Platform (ORU)	Dec-2022	Dec 2027	Dec 2027	-	-	-	5.2	46.0	\$ 51.2	
Geographic Information System (Mapping)	April 2025	Dec 2026	Dec 2027	666.8	3,466.5	-	443.6	1,179.1	\$ 5,756.0	Delayed project due to vendor negotiations
IT System Testing COE ORU	Dec-2022	Jun 2027	Jun 2027	-	29.6	-	10.8	317.6	\$ 358.0	
L&I Digital Learning Transformation Or	Aug-2022	Dec 2027	Dec 2027	-	-	-	-	33.2	\$ 33.2	
Mainframe Data Retention and Archival		Dec 2026	Dec 2026	-	-	-	10.1	882.9	\$ 893.0	
New Business Training Program		Dec 2025	Dec 2025	-	-	-	-	-	\$ -	Project scope is being evaluated
Nucon Replacement	Apr 2025	Dec 2026	Dec 2026	80.0	1,120.3	-	57.9	0.2	\$ 1,258.4	
O&R AMI Analytics		Dec 2027	Dec 2027	-	-	-	12.9	2,067.0	\$ 2,079.9	
O&R Retail Access System Replacement from CECONY	Jan 2024	Dec 2026	Dec 2028	7.0	-	-	2.7	717.6	\$ 727.3	
O&R Project Management Software	Oct-2018	Dec 2026	Dec 2026	42.4	-	-	23.2	-	\$ 65.6	
Oracle Analytical Systems Platform	Mar-2022	Dec 2028	Dec 2028	-	-	-	-	-	\$ -	Will be placed in services each year over time
ORU EV Charging Infrastructure		Dec 2028	Dec 2028	168.1	2,486.8	2.8	132.6	36.0	\$ 2,826.3	
ORU EV Charging Infrastructure		Dec 2028	Dec 2028	-	-	-	-	-	\$ -	

Orange and Rockland Utilities, Inc.

Electric Rate Case E-24-0060

NY Common Rate Case - Twelve Month Update

Total Estimate and Spending Summary - Projects Over \$0.5 Million

Twelve Months Ending December 31, 2025 Rate Year 1

<u>Project Description</u>	<u>Original Estimate</u>	<u>Current Estimate</u>	<u>Delta from original Estimate</u>	<u>Delta percent from original Estimate</u>	<u>Reason for difference</u>	<u>Total Project Spending Thru 12-31-2025</u>
AMI ORU/CECONY Synch work	\$ 1,247.3	\$ 1,247.3	\$ -	0%		\$ -
Budget System Software Enhancements	\$ 338.7	\$ -	\$ 338.7	100%		\$ -
CC&B Enhancements	\$ 1,603.0	\$ 5,600.0	\$ (3,997.0)	-249%	Increase in shared cost from CECONY	\$ 3,882.3
Customer Analytics Reporting and Engagement Program CARE	\$ 9,012.0	\$ 9,012.0	\$ -	0%		\$ 2,614.1
Customer Data Sharing ORU	\$ 350.0	\$ 350.0	\$ -	0%		\$ 205.3
Data Governance Program ORU	\$ 317.3	\$ 803.3	\$ (485.9)	-153%		\$ 803.3
Data Integration Modernization ORU	\$ 332.5	\$ 688.6	\$ (356.1)	-107%		\$ 688.6
End User Computing ORU	\$ 1,281.0	\$ 1,281.0	\$ -	0%		\$ 394.0
Facilities Upgrades (SV and BG)	\$ 4,351.3	\$ 4,351.3	\$ -	0%		\$ -
Fraud Data Analytics Platform (ORU)	\$ 357.0	\$ 357.0	\$ -	0%		\$ 147.1
Geographic Information System (Mapping)	\$ 37,490.0	\$ 46,800.0	\$ (9,310.0)	-25%	Increase attributed to higher vendor and hardware costs	\$ 6,634.2
IT System Testing COE ORU	\$ 543.0	\$ 857.5	\$ (314.5)	-58%		\$ 857.5
L&I Digital Learning Transformation Or	\$ 253.4	\$ 253.4	\$ -	0%		\$ 203.7
Mainframe Data Retention and Archival	\$ 2,085.0	\$ 2,085.0	\$ -	0%		\$ -
New Business Training Program	\$ 550.0	\$ 550.0	\$ -	0%		\$ -
Nucon Replacement	\$ 6,000.0	\$ 6,000.0	\$ 0.0	0%		\$ 1,454.1
O&R AMI Analytics	\$ 6,188.6	\$ 6,188.6	\$ -	0%		\$ 1,933.1
O&R Retail Access System Replacement from CECONY	\$ 2,131.6	\$ 3,061.0	\$ (929.4)	-44%	Increase in shared cost from CECONY	\$ 976.9
O&R Project Management Software	\$ 280.0	\$ 1,615.5	\$ (1,335.5)	-477%	Increase in shared cost from CECONY	\$ 1,615.5
Oracle Analytical Systems Platform	\$ 6,050.0	\$ 6,324.0	\$ (274.0)	-5%	Placed in Service by Year	\$ 9,823.9

**Orange & Rockland Utilities**  
**Actual vs. Budget Operations & Maintenance Expenses**  
**December 2025**  
(\$000s)

<b>DEPARTMENTAL</b>	<b>December MTD</b>			<b>December YTD</b>			
	<b>Actual</b>	<b>Budget</b>	<b>Variance</b>	<b>Actual</b>	<b>Budget</b>	<b>Variance</b>	<b>%</b>
Electric Engineering	1,600	971	629	9,144	11,651	(2,507)	-22% <i>Driven by lower than budgeted labor costs (more capital labor)</i>
Electric Operations	6,173	4,900	1,273	70,217	60,440	9,777	16% <i>Driven by higher than budgeted labor costs</i>
Gas Engineering	943	701	242	7,729	7,454	275	4%
Gas Operations	2,324	1,760	564	21,340	21,449	(109)	-1%
Customer Service	4,466	3,475	991	37,318	36,998	320	1%
Environment, Health, & Safety	264	211	53	2,858	2,518	340	14%
Support Operations	285	251	34	3,152	3,025	127	4%
Corporate Affairs	298	286	12	3,151	3,422	(271)	-8%
Information Technology	1,311	1,297	14	13,589	15,568	(1,979)	-13%
Corporate Shared Services	130	148	(18)	1,762	1,774	(12)	-1%
Utility Shared Services	681	658	23	7,501	7,558	(57)	-1%
<b>Total Departmental</b>	<b>18,475</b>	<b>14,658</b>	<b>3,817</b>	<b>177,761</b>	<b>171,857</b>	<b>5,904</b>	<b>3%</b>
<b>CORPORATE</b>							
Pension & OPEBs	(1,892)	(1,892)	-	(22,705)	(22,705)	-	0%
Health & Employee Benefits	1,441	1,609	(168)	20,898	21,048	(150)	-1%
Insurance	279	434	(155)	5,228	5,218	10	0%
Shared Services	2,528	1,820	708	24,770	22,277	2,493	11%
Capitalized & Recovered Costs	(2,350)	(2,577)	227	(16,662)	(26,824)	10,162	-38% <i>Lower than budgeted total capital labor</i>
Regulatory Amortizations & Assessments	2,540	2,981	(441)	36,230	35,777	453	1%
Non-Deferred Storm Expense	762	692	70	4,130	4,248	(118)	-3%
Other Corporate O&M - UB True Up	(818)	(53)	(765)	(921)	(630)	(291)	46% <i>Driven by higher than budgeted uncollectibles</i>
Other Corporate O&M	2,120	2,819	(699)	25,156	31,908	(6,752)	-21% <i>Driven by lower than budgeted corporate contingencies</i>
<b>Total Corporate</b>	<b>4,610</b>	<b>5,833</b>	<b>(1,223)</b>	<b>76,124</b>	<b>70,317</b>	<b>5,807</b>	<b>8%</b>
<b>TOTAL OPERATIONS &amp; MAINTENANCE</b>	<b>23,085</b>	<b>20,491</b>	<b>2,594</b>	<b>253,885</b>	<b>242,174</b>	<b>11,711</b>	<b>5%</b>

**Orange & Rockland**  
**O&M Reporting Requirements**  
4th Qtr 2025

<u>Program</u>	<u>(\$000's)</u> <u>2025 Annual Budget</u>	<u>QTR 4</u>			<u>Year-to-Date (Dec)</u>		
		<u>Actual</u>	<u>Budget</u>	<u>Variance</u>	<u>Actual</u>	<u>Budget</u>	<u>Variance</u>
<i>DA Battery Replacement</i>	\$ 70.0	\$ 1.9	\$ 17.5	\$ (15.6)	\$ 40.2	\$ 70.0	\$ (29.8)
<i>Aerial Inspections</i>	\$ 215.5	\$ (50.6)	\$ 45.3	\$ (95.9)	\$ 62.6	\$ 215.5	\$ (152.9)
<i>Infrared Inspections</i>	\$ 578.8	\$ -	\$ 87.5	\$ (87.5)	\$ -	\$ 578.8	\$ (578.8)
<i>Shoreline Erosion</i>	\$ 41.0	\$ 13.6	\$ 10.3	\$ 3.4	\$ 79.8	\$ 41.0	\$ 38.8
<i>Grid Mod 4G - 5 G</i>	\$ 22.0	\$ -	\$ 5.5	\$ (5.5)	\$ -	\$ 22.0	\$ (22.0)

RC Exhibit Group	Electric Blanket
------------------	------------------

Row Labels	Sum of 2026	Sum of 2027	Sum of 2028	Sum of 2029	Sum of 2030
Smart Grid Automation Resiliency Projects - NY	8,478,400	8,726,108	8,500,003	8,500,003	4,000,008
E Dist Bkt - New Business NY	8,410,881	11,218,376	21,384,968	21,526,347	21,511,194
E Dist Bkt -Sys Reliability NY	7,868,361	7,472,039	8,574,405	8,551,882	8,590,698
E Dist Bkt - Replacement NY	6,713,104	6,544,919	6,784,952	6,769,001	6,793,665
Transformers - NY OH (Incl Contributions)	2,214,911	2,187,500	5,654,688	5,654,688	5,654,688
Transformers - NY UG (Incl Contributions)	1,887,501	1,887,501	4,272,073	4,272,073	4,272,073
U/G Rebuild Blanket (NY)	1,786,200	1,825,102	4,500,000	4,500,000	4,500,000
EMS Equipment Upgrade Blanket	1,240,075	589,452	589,477	589,477	589,477
JUMP Program - EMS Expansion Bkt	1,182,800	982,800	982,800	982,800	982,800
Substation_Secondary Oil Containment Program-NY	1,125,000	1,124,808	1,125,000	1,125,000	1,125,000
NY Incremental Reliability - Defective Poles Blanket	1,089,202	1,093,863	1,592,580	1,592,580	1,592,580
GRID Mod 4G-5G	861,999	862,000	1,600,003	1,600,003	1,600,003
Electric Meter 1st Install Bkt - NY	800,000	800,000	0	0	0
U/G Rehab Blanket (NY)	619,408	619,408	640,468	640,468	640,468
Electric Meter Purchases - NY	600,000	600,000	0	0	0
Transmission Relay Upgrade Bkt - NY	499,940	499,995	800,000	800,000	800,000
E Dist Bkt - Interference NY	444,550	491,456	435,067	434,295	436,063
Substation Department Blanket - NY	412,553	204,296	206,278	206,278	206,278
RTU Upgrades	400,000	400,036	400,000	400,000	400,000
Substation Security Equipment Transmission	199,735	199,735	2,200,000	2,200,000	4,200,000
O/H Capital Tools Blanket (NY)	188,750	188,750	188,750	188,750	188,750
Oil Pump and Retire Blanket	120,000	120,000	120,000	120,000	120,000
CMO Miscellaneous Equipment Bkt - NY	100,000	100,000	0	0	0
Paving & Drainage Blanket - NY	99,605	99,605	100,000	100,000	100,000
Smart Grid Equipment Blanket	74,703	74,897	75,000	75,000	75,000
U/G Capital Tools Blanket (NY)	72,200	72,200	72,200	72,200	72,200
Tamar Property ROW Acquisition for Line 562	50,001	50,000	50,001	50,001	50,001
2015 NY Incremental Reliability TL Enforcement Blanket	50,000	50,000	199,900	199,900	199,900
Substation Comm. Protection Bkt - NY	7,200	7,300	0	0	0
Pole Butt Removal Blanket	0	70,000	120,000	120,000	120,000
Shoreline Erosion Protection	0	1,060,900	0	0	0
Shoreline Protection Blanket	0	1,500,073	1,500,000	1,500,000	1,500,000
New Business Electric UG (NY)	0	0	0	0	0
Enhanced OH (Hendrix System)	0	0	0	0	0
AMI Communication Device Battery Replacement Project	0	0	0	0	0
Distribution Automation	0	0	0	0	0
DA RTU Replacement	0	0	0	0	0
Tower Leg Remediation	0	0	0	0	0
Micronet Weather Stations	0	0	0	0	0
MOAB Upgrade Program	0	0	0	0	0
CSX Shoreline Structure Blanket	0	0	4,000,000	4,000,000	4,000,000
2011 Transmission Pole Replace	0	0	0	0	0
Storm Material Management (Transmission)	0	379,000	0	0	0
NY UG Storm Hardening Program	0	6,000,049	6,000,000	8,000,000	8,000,000
Storm Material Management (Distribution)	0	681,996	0	0	0
OH Structure Replacement	0	3,172,400	0	0	0
Sale of Scrap Blanket	(136,800)	-136,800	0	0	0
<b>Grand Total</b>	<b>\$ 47,460,281</b>	<b>\$ 61,819,763</b>	<b>\$ 82,668,613</b>	<b>\$ 84,770,745</b>	<b>\$ 82,320,845</b>

RC Exhibit Group	Electric Project Over \$1M
------------------	----------------------------

Row Labels	Sum of 2026	Sum of 2027	Sum of 2028	Sum of 2029	Sum of 2030
Forest Ave Substation	21,730,167	0	0	0	0
State School Road Substation	21,000,000	0	0	0	0
New Line 705 Underground	14,000,000	0	0	0	0
Forest Ave Substation UG Exits	9,500,000	9,999,998	0	0	0
Upgrade of Trans. Line 841, 851, 853 to 69kV	9,233,761	4,213,708	0	0	0
Line 96 Double Circuit Rebuild	8,000,000	22,055,928	5,000,000	2,000,000	0
West Nyack 2nd Autobank	7,016,100	0	0	0	0
Westtown UG Circuit Exits	7,000,000	0	0	0	0
Burns UG Circuits	6,000,000	2,999,982	0	0	0
State School Road Sub UG Exits	5,000,000	0	0	0	0
New Shoemaker 34.5kV, 69 and 138 Yards	5,000,000	16,999,919	25,000,000	30,000,000	5,000,000
ADMS Phase 2-DERMS	4,000,000	3,499,977	3,000,000	3,000,000	2,000,003
Burns 2 - 56 MVA Banks	3,500,000	0	0	0	0
New Goshen Station	3,400,000	15,000,206	22,000,000	8,000,000	0
Wilson Gate Joi_PrjID:06125	3,259,100	1,504,777	0	0	0
Lines 551/702 and 562 Shield Wire Pole Replacements, NYS ThruwayCr	3,200,000	0	0	0	0

Snake Hill - Urd Dip (Snake Hill to Nyack) 13,200 ft	3,100,000	4,279,426	0	0	0
Monsey 240 MVA Banks	3,000,000	0	0	0	0
Bullville Substation Upgrade	3,000,000	11,000,715	10,000,000	7,500,000	0
Burns Terminal	2,261,600	0	0	0	0
Forest Avenue OH Transmission	2,161,600	0	0	0	0
Bloomingsburg SH UG 109-4-34 Winterton Rd	1,843,600	1,040,325	0	0	0
Transmission to State School Road Sub	1,600,000	0	0	0	0
Upgrade Line 18 to 69kV	1,501,162	14,999,555	18,001,207	10,000,000	5,000,000
Removal of Deenergized Transmission Facilities	1,500,000	2,500,516	2,500,000	2,500,000	2,500,000
OH 69 kV TL from Washington Heights to Bullville	1,500,000	14,999,853	20,000,000	8,000,000	3,000,000
Sparkill Circuit Exits	1,500,000	0	0	0	0
Rio Two 69-13.2kV Banks	1,500,000	2,999,967	14,000,000	14,000,000	0
Otisville Substation	1,500,000	1,000,000	7,500,000	14,000,000	6,000,000
Blooming Grove - Helms Hill Rd & Mtn Lodge Rd - 6500ft Hendrix	1,499,986	0	0	0	0
Operational Technology Infrastructure	1,200,014	542,478	550,010	1,900,014	1,200,014
O&R EEDM Forecasting	1,000,001	0	0	0	0
Transmission reconfiguration for Shoemaker 69/138kV yards	1,000,000	3,000,877	4,000,000	5,000,000	0
Burns Breaker Replacement	1,000,000	0	0	0	0
CSX West Shore Line Structures 67 & 68	800,000	0	0	0	0
Old Nyack Turnpike UG Ckt 21-16-13	700,000	0	0	0	0
Pascack Rd UG Ckt 19-13-13	700,000	0	0	0	0
Dean Substation Upgrade Design and Construction	565,700	301,266	0	0	0
Harriman UG SH Ckt exits 71-1,2, & 8-13	534,200	200,183	0	0	0
Line 96 2nd Circuit Terminal at Monroe	500,000	1,000,197	0	0	0
Upgrade Transmission Lines 12 & 13/131	500,000	7,999,534	500,000	500,000	1,000,000
New Goshen Transmission Tap	313,640	2,046,373	1,431,069	0	0
Washington Heights Second 69kV Transmission Terminal	300,000	1,100,113	1,600,000	0	0
Tuxedo Park - Crows Nest to S. Gate UG SH - 5100ft	300,000	0	0	0	0
New Goshen UG Circuit Exits	250,000	2,249,791	6,000,000	0	0
U/G Storm Hardening - Blue Lake Ckt Exit	250,000	0	0	0	0
West Haverstraw - Rt 202 to Rt 9W - 6400ft	250,000	0	0	0	0
Shoemaker 50MVA Banks on 138kV Bus	204,757	1,999,941	4,000,000	4,000,000	0
Shoemaker UG Exits	204,669	2,500,246	7,500,000	5,000,000	0
(blank)	117,485	125,005	120,477	117,120	0
U/G Storm Hardening - Gilchrest Rd, Congers	100,000	1,900,140	0	0	0
Bullville Transmission Tap	100,000	1,099,607	1,100,000	1,600,000	0
Little Tor Substation, Transm Tap and UG Circuit Exits	8,547	0	209,544	209,300	200,000
Westtown Bank Replacement	0	4,000,075	0	0	0
Sparkhill-Ferdon-Rockland Rd. Hendrix New tie 50-2	0	0	0	0	0
Mongaup 69-13kV Banks	0	1,000,047	1,500,000	4,000,000	18,000,000
Lovett 345kv Station, Remote Relaying and Transmission	0	0	0	0	0
Mongaup UG Exits Upgrades	0	0	0	250,000	2,000,000
Storm Material Management Facility	0	10,500,000	0	0	0
Monsey - Ralph to Jill La to Rita to Susanne to Howard - 5200 ft	0	1,200,987	0	0	0
West Nyack Breaker Replacements	0	0	0	0	0
Burns = 19-12-13 - 4,000 ft	0	0	0	0	0
Wurtsboro - Mt Vernon Rd (Part 2) - Hendrix (SH)	0	0	0	0	0
ADMS Software System	0	0	0	0	0
Mongaup - Mill Road (Station to Cty Rt 43) 9,000ft - 2-1-13	0	0	0	0	0
Blooming Grove Banks, UG Ckt Exits, Transm Ext	0	0	0	0	0
Blooming Grove UG Circuit Exits	0	0	0	0	0
Lines 11/14 Pole 68	0	0	0	0	0
Lovett Flood Mitigation	0	5,406,300	0	0	0
2023 Pine Island-Pulaski Highway Close Gap Goshen	0	0	0	749,998	0
Bullville - Bullville Rd - bet P# 49378/56151 & P#	0	0	0	0	1,700,034
Little Tor Sub - Rt 45 (S Mtn to Rt 202) - 3,800 ft - Urd Dip	0	2,200,048	2,200,000	0	0
West Warwick Substation, UG Ckt Exits, Sugarloaf Bus Ext	0	0	0	0	0
Blooming Grove Decommissioning	0	0	0	0	0
Forest Ave Mobile	0	0	0	0	0
NYSERDA PON 4074 Westtown Dist Automation	0	0	0	0	0
Long Duration Energy Storage (2MW/ 144MWh)	0	0	0	0	0
Goshen - Cheechunk Rd. 6 1/2 Station Road to Owens Rd	0	0	0	0	0
Shoreline Protection Program - Line 98, Line111/14 and Line 11/14	0	0	0	0	0
Silver Lake, Upgrade Bank 2113 to 35MVA	0	0	0	0	0
Hillburn Breaker Replacements	0	0	2,500,000	1,000,000	0
Solar Benefits for All	0	0	0	0	0
Lines 531/541 Structures 86 & 87	0	0	0	0	0
Bullville UG Circuit Exits	0	2,148,117	3,500,000	2,500,000	0
Sugarloaf 138kV - West Warwick	0	0	0	0	0
34.5kV Breaker Replacement	0	0	0	0	0
T/L 311 - Shoreline Protection	0	0	0	0	0
Storm Resilience Center	0	0	0	0	0
CSX West Shorelines Structure 190, 197, 211	0	0	0	0	0

Glen Spey - Mohican Lake Road - 2 Miles Hendrix	0	0	0	0	0	
Ladentown Four (4) - 345kV Breaker Puchase	0	0	0	0	0	
CYME	0	0	0	0	0	
Lines 98, 981 and 99 Shield Wire Replacement	0	0	6,000,000	6,000,000	0	
Lines 55/56, Structure 33 and Lines 551/56, Structures 48 &50	0	0	0	0	0	
Goshen - Old Chester Rd. Heritage Estates to Goshen Training Center	0	1,200,987	0	0	0	
U/G Storm Hardening - Thiells Mt Ivy Rd, Thiells	0	0	0	0	0	
OMS Enhancements	0	1,999,999	0	0	0	
Line 311 Structure number 63 replacement	0	0	0	0	0	
Upper Nyack - Broadway (Castle Heights to Larchdale)	0	1,100,000	0	0	0	
Line 51 Upgrade	0	0	0	0	0	
Vayoel Moshe Gardens	0	0	0	0	0	
Viola Property	0	0	0	0	0	
ORU Emergency Response Ops & Control	0	7,836,000	0	0	0	
Washingtonville - Goshen Ave (RT-208)- 8400ft Hendrix	0	0	0	1,700,000	0	
ORU PI Historian Software/Hardware Replacement of eDNA Historian EMS	0	0	0	0	0	
West Haverstraw 138kV Breaker Replacements	0	0	0	0	0	
ORU REV DER EEDM Forecasting Tool	0	0	0	0	0	
West Nyack Banks, Swgr, Exits, Transm	0	0	250,000	500,000	12,000,000	
2025-2027 Rate Period (Blooming Grove   6MW/ 30MWh) - Total	0	0	0	0	0	
West Shore Rail Line Structures 30, 110, 145	0	0	0	0	0	
Wurtsboro 13.2kv UG exits	0	0	0	0	0	
Westtown 2nd 35MVA Bank and New Circuits	0	0	0	0	0	
Forestburg - French Clearing Road 8800ft - Hendrix	0	0	0	1,299,998	0	
EV / Storage Projects	0	0	0	0	0	
Corporate Drive 56MVA Banks	0	1,000,258	0	0	0	
Woodbury Batteries	0	0	0	0	0	
Rio - 5-3-34 - URD Dip	0	0	0	0	0	
Line 31 Reconductor	0	0	0	0	0	
Hillburn Bank 317 Replmt & Switchgear	0	5,999,930	0	1,500,000	3,000,000	
Pomona Extension (3MW/ 12 MWh) - Total	0	0	0	0	0	
New Mobile Substation	0	4,000,017	0	0	0	
<b>Grand Total</b>	<b>\$</b>	<b>169,206,088</b>	<b>\$ 204,753,368</b>	<b>\$ 169,962,308</b>	<b>\$ 136,826,431</b>	<b>\$ 62,600,051</b>

RC Exhibit Group Electric Project Under \$1M

Row Labels	Sum of 2026	Sum of 2027	Sum of 2028	Sum of 2029	Sum of 2030
Westtown 2nd 35 MVA Bank	12,000,000	0	0	0	0
Storm Material Management Facility	7,779,802	0	0	0	0
ORU Emergency Response Ops & Controls	5,460,951	0	0	0	0
Lovett Flood Mitigation	4,249,000	0	0	0	0
2026 Transmission Pole Replacements - Resiliency	1,884,000	0	0	0	0
Warwick - Ackerman Rd (System Expansion) - 2411009031	1,800,000	0	0	0	0
L6 to 69kv-Bullville to WHgts	1,500,000	0	0	0	0
UG Clim Res - Wurtsboro 109-4-34 Pine St Rte 209 5900 ft	1,300,000	0	0	0	0
UG Clim Res - W_ Haverstraw High St Main St Suffern La 4000ft	1,200,000	0	0	0	0
Goshen - Cheechuck Rd (System Expansion) - 2411008981	1,099,992	0	0	0	0
UG Clim Res - Mongaup Plank Rd to Mill Rd	1,000,000	0	0	0	0
UG Clim Res - Orangeburg 54-2-13 ALUF Plastics 2750ft	1,000,000	0	0	0	0
Piermont - Route 9w (Storm Hardening) - 2306001677	959,991	0	0	0	0
Monroe - Cromwell Hill - Quaker to Lakes	799,992	0	0	0	0
East Wallkill - UG Relocation ECOBAT ckt 15-6B-13	750,000	0	0	0	0
East Wallkill SH UG Circuit Exit 15-1-13	750,000	799,907	0	0	0
Warwick - Clair Ann Dr & High Hill Rd (System Expansion) - 2411008982	700,192	0	0	0	0
Tallman - Cherry Lane (Storm Hardening) - 2308002514	649,999	0	0	0	0
Otisville - Mountain Rd (Storm Hardening) - 2310003218	599,925	0	0	0	0
Spring Valley - Buena Vista & Karnel - new ckt tie - 1700ft	550,000	0	0	0	0
Line 702 Upgrade	500,000	0	0	0	0
UG Dip - Six and Half Station Rd to Route 17M	500,000	0	0	0	0
Wurtsboro Sub upgrade 34kv	500,000	0	0	0	0
UG Clim Res - Stony Point 23-3-13 Central Highway 1100 ft	500,000	0	0	0	0
Lovett 138kV Bus Upgrade	500,000	0	0	0	0
Wurtsboro - Pennsylvania Ave Station Exit to Sullivan (Risk Reduction) - 24111	499,995	0	0	0	0
Middletown - Ebert Rd (System Expansion) - 2411008966	499,937	0	0	0	0
Bear Mountain - Firefighters Memorial Dr (Storm Hardening) - 2411009032	449,944	0	0	0	0
Tomkins Cove - Lakeview 4Kv Conversion	400,154	0	0	0	0
Pomona Mutual Aid Facility Tools	400,000	0	0	0	0
Montague - URD Dip for I84 (Storm Hardening)	350,006	0	0	0	0
Mongaup - Plank Rd - System Expansion	349,956	0	0	0	0



Hartley Rd Substation New UG Exit 13-1-13	320,000	0	0	0	0
UG Clim Res - W_ Haverstraw Bridge Street 27-8-13 1000 ft	300,000	0	0	0	0
Line 702 OPGW	250,000	0	0	0	0
Line 15 Double Circuit Upgrade	200,000	0	0	0	0
2026 Pole Butt Removal Blanket- NY	120,000	0	0	0	0
CLCPA-Upgrade Line 100 Decker Switch to Bullville	100,001	500,015	4,400,000	15,000,000	15,000,000
Bloomingsburg Property	100,000	0	0	0	0
Rio Substation Property	100,000	0	0	0	0
Line 4/6 Upgrade Shoemaker to Pocatello	100,000	0	1,800,000	2,000,000	12,500,000
Upgrade Line 6 Bloomingsburg to Wurtsboro Double Ckt	100,000	0	0	0	0
Sloatsburg Substation Property	100,000	0	0	0	0
Upgrade Line 6 Double Ckt Decker Switch to Bloomingsburg	100,000	0	0	0	0
Washington Heights Property	100,000	0	0	0	0
Otisville Property	100,000	0	0	0	0
CLCPA-Upgrade Line 6 Pocatello to Decker Switch	100,000	0	5,300,000	5,500,000	25,000,000
Mongaup Substation Property	100,000	0	0	0	0
2026 A-V _ Graphics Blanket	37,436	0	0	0	0
Line 703 OPGW-NY	25,000	0	0	0	0
SOC ECC Conversion	0	0	0	0	0
Montgomery - Bullville Conversion	0	0	0	0	0
27629884 - L1_Blue Lake Second Bank	0	0	0	1,000,000	1,500,000
27984228 - L1_Warwick - Welling PI & 17A System Expansion	0	0	0	0	799,900
Pearl River - Gilbert Ave - new feeder - Hendrix	0	0	0	0	0
28119938 - L1_Hillburn 138kV	0	0	2,000,000	5,000,000	10,000,000
Suffern Hilltop Rd 4kv conversion 3900 ft	0	0	0	0	0
28119939 - L1_Bullville Demo	0	0	250,000	1,250,000	0
Middletown State Hospital	0	0	0	0	0
28119940 - L1_Lake Road Switchgear Replacement (obsolescence)	0	0	1,000,000	2,000,000	3,000,000
ORU Transformer System Replacement	0	0	0	0	0
28119943 - L1_Blue Lake UG Exits	0	0	0	0	250,000
23291887 - Pearl River - Gilbert Ave - Storm Hardening	0	0	700,185	0	0
28119944 - L1_Hunt Property	0	0	0	0	500,000
State School Road Property	0	0	0	0	0
28119946 - L1_Burns Bank 519 Replacement (obsolescence)	0	0	0	0	1,000,000
Tuxedo Park Phase 4- Tower Hill - Hendrix	0	0	0	0	0
28119976 - L1_Otisville Demo	0	0	0	0	1,500,000
Viola Road Substation	0	0	1,000,000	1,000,000	10,000,000
28119980 - L1_Sugarloaf Bank 7108 Replacement (obsolescence)	0	0	0	1,000,000	1,000,000
22589788 - Monroe - Lakes Rd - Replacement	0	0	599,925	0	0
28119981 - L1_Line 702 OPGW NY	0	0	450,000	450,000	2,500,000
Orangeburg - Route 303 Reconductor (50-4-13/54-3-13 Tie)	0	0	0	0	0
28119983 - L1_Viola UG Exits	0	0	0	0	500,000
27631146 - L1_NY UG Storm Hardening Program- Incremental Resiliency	0	0	11,000,000	14,000,000	16,000,000
28119990 - L1_South Goshen Demo and PI	0	0	0	3,000,000	0
Pine Island-de-commission station L90 & Underbuild	0	0	0	0	0
28119991 - L1_Line 531/541 UG Upgrade	0	0	3,500,000	3,500,000	0
27631147 - L1_Shoemaker UG Dip	0	0	4,000,000	4,500,000	0
28119993 - L1_TL 122 2nd Circuit	0	0	500,000	7,000,000	0
Spring Valley - Church St - 4Kv Conversion	0	0	0	0	0
28119995 - L1_Orangeburg Bank 254 Replacement (obsolescence)	0	0	750,000	1,000,000	1,000,000
Suffern - Mile Road to Viola - Tie 51-2 & 51-6	0	0	0	0	0
28119997 - L1_Sterling Forest Bank 367 replacement	0	0	0	0	750,000
Tappan - Lester & Washington Ave	0	0	0	0	0
28120005 - L1_Wisner Substation Demo and Mobile Removal	0	0	1,500,000	0	0
27444399 - Monsey - Susanne Dr & Howard Ave - Risk Reduction	0	0	0	0	599,925
28120464 - L1_Line 702 Upgrade_NY	0	0	1,000,000	1,000,000	1,000,000
Urd - Dip - Rt 6 - Rt 84 overpass	0	0	0	0	0
28149664 - L1_Line 703 OPGW-NY	0	0	100,000	100,000	1,000,000
Middletown - Route 211 Goshen Tpk to Camp Orange	0	0	0	0	0
28162199 - L1_Warwick - Crescent Ave - Storm Hardening	0	0	0	0	799,900
Mongaup - Plank Road	0	0	0	0	0
28162200 - L1_Sloatsburg - Washington Ave - Storm Hardening	0	0	0	499,937	0
Monsey Bank/Bus Breakers 3-3000A	0	0	0	0	0
28162201 - L1_Goshen - Conklingtown Rd - System Expansion	0	0	0	0	949,999
Mountain Lodge - Conversion - Part 2	0	0	0	0	0
28162203 - L1_Port Jervis - S Maple Ave - Storm Hardening	0	0	0	499,937	0
22589898 - Otisville - Main St_Highland & Seybolt - Replacement	0	0	800,002	0	0
28162205 - L1_Monroe - Seven Springs Rd - Storm Hardening	0	0	0	0	1,299,837
Otisville - 13.2kV Conversion Mountain Rd. Seybolt	0	600,494	0	0	0
28162206 - L1_Thiells - Thiells Mt Ivy Rd - Storm Hardening	0	0	0	0	1,679,790
Otisville U/G Circuit Exits	0	0	3,000,000	3,000,000	0
28162253 - L1_Warwick Cherry St - Storm Hardening	0	0	0	0	199,975
23259590 - Sparkill Property Expansion	0	0	700,000	0	0

28162839 - L1_Port Jervis - Greenville Tpke - System Expansion	0	0	0	0	949,991
Pomona - Camp Hill Rd - (SH)	0	980,074	0	0	0
Advanced Distribution Management System Implementation	0	0	0	0	0
Port Jervis - King Street (SE)	0	0	0	0	0
2023 State Street Mobile Distribution Work 2209008444	0	0	0	0	0
Shoreline Protection for Towers 22 & 23 on L-69/70	0	0	0	0	0
Blooming Grove - Merriewood Re-Conductor and Conversion	0	0	0	0	0
Spring Glen - Mountindale Rd - reconductor	0	0	550,017	0	0
Blooming Grove - Mtn Lodge Rd & Perry Creek 4000Ft – Hendrix	0	0	0	0	0
Spring Valley - Viola Road (by-pass)	0	350,893	0	0	0
Blooming Grove - Round Hill Road to Clove - 2900 ft Hendrix	0	0	0	0	1,299,998
Stony Point - Wood Ave - reconductor 3 phase - 1200ft	0	0	0	0	0
Blooming Grove - Tuthill Rd - Mainline - Pt 2	0	0	0	474,998	0
Suffern - Rt 202-Hendrix Btwn P57042/42928 & 56880/42718	0	0	0	0	0
Blooming Grove - Tuthill Rd. Main Line Part 1	0	0	474,998	0	0
Tallman - Cherry Lane - Hendrix 56565/39982 & 56461/40366 - 4100ft	0	0	0	0	0
Blooming Grove Transmission Extension	0	0	0	0	0
Tuxedo - Nursery Rd - Conversion	0	140,150	0	0	0
27629889 - L1_Congers Switchgear Replacement	0	0	1,000,000	1,500,000	3,500,000
U/G Storm Hardening - Urd Dip - Waywayanda & Rt 84	0	0	0	0	0
Bloomingburg Sub Upgrade	0	499,920	0	500,000	2,500,000
27639652 - L1_Spring Valley - Morris Rd - Risk Reduction	0	0	0	0	800,298
Bloomingburg Transmission Tap	0	49,838	0	50,000	50,000
27964951 - L1_Line 15 Double Circuit Upgrade	0	0	9,500,000	12,000,000	0
Central Valley - Dunderberg -Hendrix 4200 feet	0	0	0	0	0
Urd Dip - Eatontown Rd - Rt 84 overpass	0	0	0	0	0
Central valley - Smith (P 55983/48645 56247/48818)-3200ft Hendrix	0	500,239	0	0	0
27984223 - L1_Monroe - High St. Risk Reduction	0	0	0	0	500,004
Chester - Black Meadow Road to Pine Hill Road Part 2	0	0	0	0	0
Middletown - Union School Rd 17K to Beyers Rd Conversion	0	0	0	0	0
Chester - Glenmere Ave - Pine Hill Road to Werner Ave.	0	0	0	0	0
22587197 - Stony Point - Wood Ave - Replacement	0	0	0	250,067	0
Chester - Glenmere Ave - Werner Ave to 17A	0	0	0	599,994	0
27631145 - L1_Congers UG Ckt Exits Relocations	0	0	0	1,000,000	750,000
Chester - Pine Hill Black Meadow to Kings Highway Conversion	0	0	749,998	0	0
Monroe - Lakes Rd - Cedar Cliff to Laroe Recon. & Conv.	0	600,494	0	0	0
Chester - Pine Hill Road - Black Meadow Road to Glenmere Rd	0	0	0	0	0
22589840 - 2019 Middletown - Rt-211 Goshen Tpke To Camp Orange	0	0	0	0	399,950
Chester - Pine Hill to Rt 94 - 3000 ft - New Ckt tie 63-8-13	0	0	0	0	0
Mountain Lodge - Conversion - Part 1	0	0	0	0	0
Circleville - Goshen Tpke-Shawangunk Road Conv to 17K Step	0	0	0	800,000	0
Nanuet - S. Pascack Rd - Hendrix - 3,800 feet	0	0	0	0	0
27629890 - L1_Harriman Bank Replacement	0	0	0	1,500,000	1,500,000
ORU ARVE (MB)	0	0	0	0	0
27629892 - L1_Harriman Switchgear Replacement	0	0	0	0	1,000,000
ORU Metering Authority Reporting	0	0	0	0	0
Congers - Rt 9W - P#61154/42060 & 61109/42344	0	0	0	0	0
Otisville - 13.2kV Conversion Mountain Rd. Homestead Lane	0	675,685	0	0	0
Corporate Drive Cap Bank	0	0	0	0	0
22589910 - Upper Nyack - Broadway - Storm Hardening	0	0	1,099,862	0	0
DER Software Development	0	0	0	0	0
Otisville Transmission Tap	0	100,055	1,100,000	1,600,000	0
2023 Suffern-Grandview (Forshay To Spook Rock)	0	0	800,211	0	0
Otisville-13.2kV Conversion Main St Highland & Seabolt	0	0	0	0	0
2025-2027 Rate Period (Bulville   5MW/ 25MWh) - Total	0	150,000	0	0	0
Piermont - Ash Street - Storm Hardening -1000ft Hendrix	0	350,685	0	349,992	0
Electric Operation Northern Training Yard Planning and Engineering	0	0	0	0	0
Piermont - Rt 9w (Ash P# 61355/38112)	0	0	0	0	0
Forestburg - Sackett lake Rd 6000ft – Hendrix	0	0	0	879,992	0
Pole 57 - Transmission Lines Y88/94 Shoreline Protection and Restoration	0	0	0	0	0
2025-2027 Rate Period (Goshen   5MW/ 25MWh) - Total	0	150,000	0	0	0
Pomona Battery - SCADA Telemetry	0	0	0	0	0
Goshen - Pulaski Highway (Part 1)	0	0	699,993	0	0
Port Jervis - Hamilton (4kv Conversion)	0	0	0	0	0
Goshen - Pulaski Highway (Part 2)	0	700,127	699,993	0	0
Port Jervis - West Broome St and Delaware St Conversion	0	0	0	0	0
Goshen-Clowes / W Maon / Grand/Canal 4kv	0	0	0	0	0
Rio UG exit upgrades	0	250,420	1,500,000	1,500,000	0
Grandview - Rt 9w (old Mountain P# 61313/39092 & 61307/38583- 4900ft-	0	0	0	0	0
27631149 - L1_UG Clim Res - Mongaup Plank Rd to Mill Rd	0	0	1,000,000	0	0
2025-2027 Rate Period (Otisville  6MW/ 24MWh) - Total	0	150,000	0	0	0
Sparkill Substation Expansion	0	0	0	0	0
Wisner - Circuit Reliability 80-3-13	0	0	0	0	0

26242103 - L1_CLCPA-Upgrade Line 6 Double Ckt Decker Switch to Bloomingt	0	0	100,000	1,200,000	1,500,000	
Wurtsboro - Cty Rd 56 - Sullivan Ave to 10-2-13	0	0	0	0	0	
Spring Valley - Madison Ave - Reconductor	0	0	0	0	0	
27629895 - L1_West Haverstraw Bank Upgrades	0	0	0	1,500,000	1,500,000	
Spring Valley-S Pascack Rd -3,000 ft Hendrix	0	0	0	0	0	
27629896 - L1_West Haverstraw Switchgear Replacement	0	0	0	0	1,000,000	
Stony Point - Beach Road & E Main Street - 2300 ft	0	400,000	0	0	399,800	
Wurtsboro Transmission Tap	0	0	0	0	50,000	
26242104 - L1_Upgrade Line 6 Bloomingburg to Wurtsboro Double Ckt	0	0	100,000	100,000	2,100,000	
2022 Bakertown Road Widening Kiryas Joel WR 2107002922	0	0	0	0	0	
Suffern - Rt 202-Hendrix Btwn P357281/43085 & 57112/42935	0	0	0	0	0	
27630235 - L1_ORU PI Historian Software and Hardware Upgrade	0	0	0	500,012	0	
Suffern - Wilder Road (Lime Kiln to Rt 202)	0	0	0	0	0	
Line 18 Terminal at Rio	0	249,936	750,000	0	0	
Summitville Flood Mitigation	0	0	0	0	0	
27630237 - L1_Line 18 Terminal at Port Jervis	0	0	1,000,000	0	0	
26954777 - Mountain Lodge - Conversion Part 2 - Replacement	0	0	0	699,912	0	
Line 60 Shoreline Protection	0	0	0	0	0	
26954778 - Mountain Lodge - Conversion Part 1 - Replacement	0	0	849,894	0	0	
27630240 - L1_Shoreline Erosion - Resiliency	0	0	1,093,000	1,126,000	1,150,000	
Tuxedo Park - East Lake & Crows nest - 4kv to 13.2kv conversion	0	0	0	0	0	
20457716 - West Nyack Trans Reconfig	0	0	0	200,000	750,000	
U/G Storm Hardening - Congers Ave, Congers	0	0	0	0	0	
27629886 - L1_Burns Bank 819 Replacement	0	0	1,500,000	1,500,000	2,000,000	
26954780 - Pomona - Camp Hill Rd - Storm Hardening	0	0	979,877	0	0	
27629887 - L1_Burns Switchgear Replacement	0	0	0	1,000,000	1,500,000	
27540577 - Monsey - Decatur Ave & Maple Ave - Risk Reduction	0	0	0	0	349,956	
27630244 - L1_Transmission Pole Replacements-Resiliency	0	0	4,917,000	5,909,000	6,132,000	
27568292 - L1_Goshen NY - Rt 17M Hartley Rd to Lower Rd	0	0	1,499,991	0	0	
West Nyack 138kV Yard	0	0	1,000,000	8,000,000	15,000,000	
27629885 - L1_Blue Lake Switchgear	0	0	0	1,000,000	1,500,000	
27629888 - L1_Congers Bank Replacement	0	0	1,500,000	2,000,000	3,500,000	
27984220 - L1_Warwick - E Ridge & Corners System Expansion	0	0	0	0	2,300,013	
Middletown - 17K Scotchtown Collabar to Union School Rd Conv	0	600,494	0	599,994	0	
Urd - Dip - State Highway Cty Rt35- Rt 84 overpass	0	0	0	0	0	
22043140 - Tappan - Lester & Washington Ave - Risk Reduction	0	0	750,290	0	0	
VA Sensors Production Testing	0	0	0	0	0	
Middletown - Foster Rd Re-Conductor and Conversion	0	0	0	0	0	
Viola UG Transmission Tap	0	0	1,500,000	1,000,000	8,000,000	
Middletown - Gas Plant 4Kv Circuit Removal	0	0	0	0	349,992	
Middletown - Kirbytown Rd. Mt. Orange to Pocatello	0	750,876	0	749,998	0	
Warwick - Pumpkin Hill Road Hendrix -2,000 feet	0	0	0	0	0	
Line 751 Shoreline Protection Program	0	0	0	0	0	
Wesley Hills Rt 306 - 57271-57301-Hendrix-3100ft	0	0	0	0	0	
Lines 24/25 Structure 24 Replacement	0	0	0	0	0	
West Nyack Road UG Relocation - 1,100ft	0	0	0	0	0	
20457946 - West Nyack UG Transmission reconfig	0	0	0	200,000	1,800,000	
22043114 - Suffern - Wilder Rd - Storm Hardening	0	0	0	700,201	0	
Woodbury (KJ) Property	0	0	0	0	0	
Hillburn Flood Mitigation	0	0	0	0	0	
Wurtsboro - Mr Vernon Road - reconductor (Pt 1) Hendrix - SH	0	0	0	0	0	
Howells-Pine Grove-Timothy Collard-Maple	0	0	574,992	0	0	
Wurtsboro - Sullivan Street - Yankee lake	0	0	0	0	0	
Install OPGW on T/L 702	0	0	0	0	0	
Wurtsboro Substation Replacement	0	0	0	0	750,000	
Intersection Improvement Suffern Ln & Hammond Rd	0	0	0	0	0	
10106557 - W Nyack UG Ckt Exit Relocation	0	0	0	200,000	500,000	
L1_Tuxedo Park - UG dip - Front Gate	0	100,172	0	0	0	
<b>Grand Total</b>	<b>\$</b>	<b>53,836,276</b>	<b>\$ 9,650,473</b>	<b>\$ 81,640,230</b>	<b>\$ 123,490,036</b>	<b>\$ 175,711,328</b>

RC Exhibit Group Gas Blanket

Row Labels	Sum of 2026	Sum of 2027	Sum of 2028	Sum of 2029	Sum of 2030
Bare Steel Main Replacement Blanket	28,806,603	29,418,660	26,232,100	29,737,000	29,737,000
Bare Steel Service Replacement Blanket	14,609,704	14,640,732	13,500,000	13,500,000	13,500,000
Mains-Municipal Blanket	6,897,686	5,536,085	8,300,000	8,300,000	8,300,000
Services - New Business Blanket	6,006,554	5,679,967	4,333,000	3,000,000	3,000,000
Aldyl Replacement Blanket - Services	5,728,892	4,975,466	4,500,000	4,500,000	4,500,000
AMI Natural Gas Detector Program	5,724,415	5,812,527	13,500,400	13,500,400	13,500,400
Adldyl Main Replacement Blanket	4,724,960	4,953,936	5,000,100	5,000,100	5,000,100
Aldyl Plastic Replacement Blanket - Meter Bars	2,730,839	2,773,264	2,500,000	2,500,000	2,500,000
Mains - New Business Blanket	2,170,311	2,012,418	1,832,000	1,357,000	1,357,000
Pipeline Integrity Gate Station Upgrades	1,500,081	999,999	4,500,099	4,500,099	3,500,100
Cathodic Protection - (Protection) Blanket	1,004,987	1,005,000	1,000,000	1,000,000	1,000,000
New Business Gas Service Blanket (NY)	879,848	-	-	-	-
Transmission-Distribution Blanket	649,904	650,036	2,149,900	2,149,900	2,149,900
10006297 - Services Municipal	600,363	599,990	1,100,000	1,100,000	1,100,000
Gas Meter Purchases Blanket	550,029	550,025	1,550,000	1,350,000	1,350,000
Gas Tools and Work Equipment Blanket	364,369	364,403	360,000	360,000	360,000
27706678 - L1_Main Replacement - Bridges	344,929	345,000	5,500,000	5,500,000	5,500,000
Reg Install - New Business Blanket	323,116	388,222	324,000	253,000	253,000
Excess Spoil Removal	300,000	299,500	300,000	300,000	300,000
Bare Steel Replacement - Reg Install Blanket	297,170	327,853	300,000	299,999	300,000
CATHODIC PROTECTION BLANKET FOR TEST STATIONS	289,987	290,033	299,900	299,900	299,900
Gate Station Improvements Blanket	250,003	250,001	500,000	500,000	500,000
Remote Operated Valve Blanket	249,949	250,000	249,900	249,900	249,900
Elimination of Farm Taps	249,878	249,929	-	-	-
Aldyl Replacement Blanket - Regulator Installaton	249,613	249,949	230,000	230,000	230,000
GCC Facility Upgrades	224,966	-	899,900	899,900	499,900
Bare Steel Replacement - Meter Bars Blanket	220,868	221,103	200,000	200,000	200,000
Metretek Remote Reading Equipment Blanket	191,461	191,500	200,000	200,000	200,000
Industrial Reg & Metering Blanket	175,065	172,736	175,000	175,000	175,000
Regulator Station Improvements Blanket	174,964	175,000	525,000	525,000	525,000
Meter Bars - Municipal Blanket	149,006	149,529	155,800	155,800	155,800
Regulator Materials	135,568	138,083	140,300	140,300	140,300
GCC Improvements Project	124,980	125,000	125,000	125,000	125,000
Cathodic Protection - (Services) Blanket	119,055	119,080	120,000	120,000	120,000
Valve Replacement Program Blanket	100,801	100,822	100,000	100,000	100,000
GCC Network Upgrades	99,979	100,000	100,000	100,000	100,000
Gate Station Generators Blanket	48,927	48,939	50,001	50,001	50,001
27708597 - L1_High Emitter Pipe Replacement -Mains	-	-	3,000,000	3,000,000	3,000,000
27708600 - L1_High Emitter Pipe Replacement -Meter Bars	-	-	249,996	249,971	249,995
27708599 - L1_High Emitter Pipe Replacement -Regulator Inst	-	-	50,000	50,001	50,000
Meter Bars - New Business Blanket	-	519,490	411,000	290,000	290,000
27708598 - L1_High Emitter Pipe Replacement -Services	-	-	1,500,000	1,500,000	1,500,000
<b>Grand Total</b>	<b>\$ 87,269,829</b>	<b>\$ 84,684,276</b>	<b>\$ 106,063,395</b>	<b>\$ 107,368,269</b>	<b>\$ 105,968,294</b>

RC Exhibit Group Gas Projects Over \$500K

Row Labels	Sum of 2026	Sum of 2027	Sum of 2028	Sum of 2029	Sum of 2030
KJ Reliability Contingency	3,000,145	2,500,007	3,000,200	3,000,200	3,000,200
Gas Control SCADA Upgrade and Display Upgrade	461,874	994,969	499,900	499,900	499,900
Vayoel Moshe Gardens- Phase 1	166,237	190,634	150,000	150,000	150,000
MR-BS Orangeburg Upgrade	72,959	76,626	-	-	-
GMD vxField Infrastructure Enhancements	-	-	573,101	573,101	573,101
Gas OMS	-	-	352,500	351,100	300,000
Vayoel Moshe Gardens Nininger Rd Phase 2 Gas	-	866,304	900,000	900,000	900,000
<b>Grand Total</b>	<b>\$ 3,701,215</b>	<b>\$ 4,628,540</b>	<b>\$ 5,475,701</b>	<b>\$ 5,474,301</b>	<b>\$ 5,423,201</b>

RC Exhibit Group Gas Projects Under \$500K

Row Labels	Sum of 2026	Sum of 2027	Sum of 2028	Sum of 2029	Sum of 2030
27708596 - L1_Data Governance & Innovation	717,005	717,000	500,000	500,000	500,000
27708595 - L1_Ultrasonic Meter & Supermonitor Program	500,004	500,000	500,004	500,004	500,004
Locus View	49,409	49,417	50,000	50,000	50,000
27708594 - L1_Low Carbon Fuels - Interconnections	-	-	200,000	200,000	200,000
Goshen Training Center Improvements	-	99,953	-	-	-
Monsey Reliability Contingency	-	199,644	200,000	200,000	200,000
24795157 - L1_Monroe/ Kiryas Joel	-	-	3,000,000	3,000,000	2,500,000
28204620 - L1_Rt 210 - Trans Pipe Replacement	-	-	5,000,000	-	-
<b>Grand Total</b>	<b>\$ 1,266,418</b>	<b>\$ 1,566,014</b>	<b>\$ 9,450,005</b>	<b>\$ 4,450,004</b>	<b>\$ 3,950,005</b>

RC Exhibit Group	Common Blanket
------------------	----------------

Row Labels	Sum of 2026	Sum of 2027	Sum of 2028	Sum of 2029	Sum of 2030
Truck Replacement Blanket	19,025,600	9,815,136	17,468,396	10,269,900	10,025,664
Mainframe & Infrastructure Upgrades	2,455,000	300,000	300,000	300,000	300,000
Perimeter Protection Program	2,100,000	1,234,000	2,100,000	2,100,000	2,100,000
Security System Cameras Monitor Bkt - NY0	1,650,000	1,250,000	1,150,000	1,150,000	1,150,000
IT Shared Services - Cybersecurity Blanket	1,216,400	996,200	1,225,442	1,347,570	1,441,900
Passenger Car Replacement Blanket	989,538	3,306,876	755,668	1,388,570	488,668
Corporate Website Upgrade (DCX) Blanket	783,900	840,000	1,100,000	1,100,000	1,100,000
Building Improvements Blanket	749,960	749,960	1,000,000	1,000,000	1,000,000
Replacement of Obsolete Technologies	601,891	517,000	775,500	775,500	775,500
Corporate P/C Purchase Blanket	423,900	400,000	420,000	420,000	420,000
Buidling Roof Program Blanket	311,024	378,504	600,058	1,099,951	1,100,117
Transportation Equip Replacement Bkt	300,000	300,000	2,438,348	2,576,294	743,549
Misc. Equip Replacement - Transp. Bkt	300,000	300,000	330,000	330,000	330,000
SVOC Building Roof Program	249,959	1,749,954	1,500,099	0	0
Telecommunications Blanket - NY	225,619	113,224	276,595	276,595	276,595
Cyber Security Infrastructure Shared Services	225,000	225,000	483,772	500,740	535,792
IT Shared Services - Server Farm Infrastructure Blanket	222,800	154,000	1,116,500	1,116,500	1,116,500
WAN Blanket	213,831	231,512	277,112	277,112	277,112
Call Center Telephone System Blanket	150,000	150,000	150,000	150,000	250,001
CM&TO Blanket for AMI Communications	100,000	100,000	100,000	100,000	100,000
Modular Furniture Replacement Bkt - NY	74,965	74,965	74,965	74,965	300,067
Radio Blanket - NY	71,243	77,550	170,610	170,610	170,610
Stores Blanket - T&D Storerooms Blanket	50,000	50,000	50,000	50,000	50,000
CM&TO Blanket for AMI Extended Batteries	50,000	50,000	50,000	50,000	50,000
HVAC Replacement Program	49,898	50,000	250,147	250,250	250,250
Conference Ctr/Forestry Blanket	49,839	49,838	100,003	100,003	100,003
Lighting Replacement Program Bkt	46,007	47,034	74,986	74,986	74,986
Video Conferencing Equipment Bkt	38,400	40,000	40,000	40,000	40,000
Cable Infrastructure Blanket	35,500	30,000	30,000	30,000	30,000
Company Furniture Blanket	34,901	34,949	34,901	34,901	34,901
Facilities Small Tools & Equipment Bkt	24,999	25,000	24,999	24,999	24,999
Safety Blanket	12,441	12,442	100,298	20,680	20,680
REV Settlement and Regulatory Requirements	0	0	500,000	500,000	500,000
Grid Modernization Infrastructure - NY.	0	750,000	0	0	0
Battery / Power Replacement	0	70,622	0	0	0
Integrated Energy Data Warehouse	0	0	0	0	0
Microwave Site Blanket - NY	0	216,002	0	0	0
IT Shared Services - Enterprise Application Blanket	0	0	0	0	0
A-V / Graphics Blanket	0	37,436	37,436	37,436	37,436
SCADA Diversity Bkt	0	50,000	0	0	0
Protective Equipment Blanket	0	0	0	0	0
L1_Corporate Security NVR and DVR replacements (ORU)	0	105,000	0	0	0
LAN Equipment Blanket	0	190,566	411,842	411,842	411,842
Transportation Vehicle Auction	-159,600	(159,600)	-159,600	-159,600	-159,600
<b>Grand Total</b>	<b>\$ 32,673,015</b>	<b>\$ 24,913,171</b>	<b>\$ 35,358,077</b>	<b>\$ 27,989,804</b>	<b>\$ 25,467,572</b>

RC Exhibit Group	Common Projects Over \$500K
------------------	-----------------------------

Row Labels	Sum of 2026	Sum of 2027	Sum of 2028	Sum of 2029	Sum of 2030
WMS Replacement Project	23,000,081	12,399,971	0	0	0
Geographic Information System (Mapping)	20,000,905	0	0	0	0
SVOC Addition	12,000,001	2,000,000	23,236,500	0	0
Nucon Replacement	4,000,000	0	0	0	0
Customer Analytics Reporting and Engagement Program CARE	3,029,002	2,928,996	1,761,641	0	0
ORU EV Charging Infrastructure	2,927,700	529,351	1,686,455	2,531,025	843,744
Credit & Collections Tools & Dashboards	2,600,000	0	1,000,000	0	0
Facilities Upgrades (SV and BG)	2,420,000	1,642,060	0	0	0
O&R AMI Analytics	2,072,411	2,128,023	697,273	738,066	789,731
Oracle Analytical Systems Platform	2,000,000	2,000,000	2,000,000	2,000,000	2,050,000
CC&B Enhancements	1,375,220	471,000	6,481,935	6,426,546	2,000,000
O&R Retail Access System Replacement from CECONY	1,221,000	0	101,100	0	0
Clean Energy Buildings	1,000,002	1,499,954	1,499,937	3,999,831	3,999,730
IT System Testing COE ORU	992,950	181,000	1,200,000	1,200,000	1,200,000

Blooming Grove Auditorium Building Improvements	450,000	0	0	0	0
Data Governance Program ORU	220,500	0	245,000	245,000	262,150
Data Integration Modernization ORU	206,920	0	455,000	245,000	262,150
Customer Data Sharing ORU	175,000	0	175,000	175,000	187,250
Microsoft 365 E5 - ORU	140,000	0	140,000	4,200,000	4,494,000
Budget System Software Enhancements	105,000	112,903	105,000	105,000	112,350
L&I Digital Learning Transformation Or	105,000	105,000	0	0	0
End User Computing ORU	75,088	325,500	83,230	39,130	41,869
Fraud Data Analytics Platform (ORU)	41,510	119,000	9,100	0	0
Middletown Paving	29,670	850,007	150,010	0	0
Privacy Readiness Program ORU	0	0	655,200	487,200	521,304
HVCA (Intrado) Replacement	0	0	0	0	0
CRM System	0	0	0	0	0
Web-Service Benchmarking Solution	0	0	0	0	0
VMS Migration	0	0	0	0	0
BG Generator and Controls	0	0	0	0	0
Spring Valley Fuel	0	0	0	0	0
Customer Information System P0	0	0	0	0	0
IT Architecture Standards/Tech Modern- Service Layer Upgrade OR	0	0	0	0	0
Middletown Hazardous Waste Building	0	0	0	0	0
Oracle BI and EBS Cloud Migration ORU	0	0	0	0	0
Oracle EBS Cloud Migration - ORU	0	0	0	9,100,000	9,450,000
Oracle HCM Cloud Implementation - ORU	0	0	0	0	0
Artificial Intelligence	0	0	0	0	0
Oracle HCM Cloud Implementation Phase 2 and 3B ORU	0	0	0	0	0
New Business Training Program	0	0	0	0	0
Real Estate Space Optimization	0	0	0	0	0
AMI ORU/CECONY Synch work	0	0	0	0	0
SV GERC Alternate Egress	0	0	0	0	0
Corporate Website Upgrade	0	0	0	0	0
SVOC Transportation Garage Siding	0	0	0	0	0
Technology Modernization	0	1,565,040	0	0	0
Telephone System Migration	0	0	0	0	0
Texting Migration to message Broadcast	0	0	0	0	0
O&R_Project Management Software	0	0	0	0	0
Blooming Grove Paving	0	650,000	99,975	499,981	249,866
Willow Brook Dam Enhancements	0	0	0	0	250,029
Main Frame Elimination	0	0	0	0	0
27173011 - L1_ORU EV Charging Infrastructure NJ	0	3,185,079	0	0	0
Mainframe Data Retention and Archival	0	0	0	0	0
<b>Grand Total</b>	<b>\$ 80,187,961</b>	<b>\$ 32,692,884</b>	<b>\$ 41,782,356</b>	<b>\$ 31,991,778</b>	<b>\$ 26,714,173</b>

RC Exhibit Group Common Projects Under \$500K

Row Labels	Sum of 2026	Sum of 2027	Sum of 2028	Sum of 2029	Sum of 2030
OMS Enhancements Project	2,005,610	0	0	0	0
2026 CCTN Program NY Project	1,748,328	0	0	0	0
Integration Technical Obsolescence ORU	1,637,000	0	0	0	0
2025 Technology Modernization Program ORU	1,568,560	0	0	0	0
Learn, Talent Management & Compensation Replacement ORU	1,159,410	0	0	0	0
Mainframe Data Retention and Archival Project	1,008,233	0	0	0	0
CDG Salesforce Portal	636,300	0	0	0	0
Employee Data Warehouse (EDW) to Autonomous Data Warehouse	516,000	0	0	0	0
AMI Systems Sustainability Program ORU	401,101	0	0	0	0
The Employee Hub System Improvements ORU	294,000	0	0	0	0
2026 LAN Equipment Blanket	290,451	0	0	0	0
Bill Pay Expansion ORU	210,000	0	35,000	91,000	97,370
Back Office Automation - Agent Tools O&R Shared Service	114,700	0	0	0	0
Transmission Owners Data Reporting System (TODRS) Market Dema	73,000	0	0	0	0
EBS on-prem upgrade to x14 ORU	56,700	0	0	0	0
Solar for All ORU - Shared Service	55,000	0	0	0	0
EBS - Full Stack Disaster Recovery DR tool implementation ORU	49,500	0	0	0	0
Obsolete Oracle GRC Software Replacement and Enterprise SoD To	25,000	0	0	0	0
Communications HUB Sites	0	0	0	0	0
Hitachi Password Manager Upgrade ORU	0	0	0	0	0
27662080 - L1_Storm Material Management Facility	0	0	5,000,038	5,000,121	0

27662075 - L1_Various Restroom/Locker Room Renovations	0	0	500,001	499,552	499,552	
27681946 - L1_TODRS Market Demand Enhancements ORU	0	0	59,990	0	0	
27155592 - L1_Obsolete Oracle GRC Software Replacement and En	0	0	29,680	33,950	36,327	
27681947 - L1_The Employee Hub System Improvements ORU	0	0	469,000	501,830	536,958	
PowerPlan Application Upgrade 2021 ORU	0	0	0	0	0	
27681948 - L1_Storm Resilience Center ORU	0	0	2,911,000	2,957,000	2,957,000	
27662079 - L1_ORU Emergency Response Ops & Controls	0	0	15,000,074	15,000,239	0	
Design Documentation Laptops	0	0	0	0	0	
27681951 - L1_Integration Technical Obsolescence ORU	0	0	2,338,000	2,338,000	2,501,660	
Enterprise Architecture Modernization (ORU)	0	0	42,000	42,000	44,940	
27681954 - L1_Storm Material Management (Transmission)	0	0	2,731,800	2,251,000	2,251,000	
Ipads for New Business	0	0	0	0	0	
27681955 - L1_Storm Material Management (Distribution)	0	0	4,917,300	4,051,801	4,051,801	
nMarket upgrade to accomodate REV (ORU)	0	0	0	0	0	
27701822 - L1_Transportation Garage Infrastructure ORU	0	0	2,001,976	2,000,890	2,000,890	
ORU Extended Battery Project	0	0	0	0	0	
27701877 - L1_Technology Modernization Program ORU	0	0	2,445,870	1,427,930	1,527,885	
23250081-L1_OMS Enhancements	0	0	2,500,003	2,500,568	2,500,003	
27923772 - L1_CDG Salesforce Portal	0	0	748,300	762,300	750,000	
Communications HUB Sites - Highland Falls	0	0	0	0	0	
27934137 - L1_CCTN Program ORU NY	0	0	3,920,189	3,977,167	4,891,417	
Design Documentation Plotter Replacement	0	0	0	0	0	
27985546 - L1_ORU Solar for All Phase 1	0	0	55,000	55,000	55,000	
EBS Exa platform replacement (ORU)	0	0	0	0	0	
28021797 - L1_Learn, Talent Management and Compensation ORU	0	0	543,723	0	0	
10106528 - CMO Miscellane Equip Bkt - NY	0	0	100,000	100,000	100,000	
28117944 - L1_Back Office Automation -Agent Tools - ORU	0	0	747,600	741,000	745,000	
Exit Gate Readers	0	0	0	0	0	
28181442 - L1_CPMS System Enhancements	0	0	0	0	500,001	
10002963 - LV1-E-T114ME-O&R-2011 SUB COMM	0	0	7,200	7,200	7,200	
28181444 - L1_CARE System Enhancements	0	0	0	0	500,000	
10106289 - Electric Meter Purchases - NY	0	0	600,000	600,000	600,000	
28209550 - L1_Fixed Asset Accounting, Tax Transformation ORU	0	0	84,000	1,820,000	1,820,000	
Mt Ivy Geothermal Heat Pump System	0	0	0	0	0	
10002457 - LV1 - O&R Stores Sale of Scrap Blanket	0	0	-136,800	-136,800	-136,800	
NYISO revenue metering daily reports (ORU)	0	0	0	0	0	
27434368 - L1_AMI Enhancements Program ORU	0	0	425,460	425,460	455,242	
23187177 - L1_Goshen Training Center Impr	0	0	100,095	0	249,918	
Project OCS Implementation for HeavyBid and P6 Loader ORU	0	0	0	0	0	
Port Jervis Exterior and Window Replacement	0	0	0	0	0	
Relocate Super Tech to Eastern Division	0	25,000	0	0	0	
27662076 - L1_Stores Yards Racking and Containers	0	0	1,500,001	1,500,003	1,500,003	
27662074 - L1_EIK Lodge Confeence Center Addition	0	0	1,500,126	7,500,005	5,999,723	
27318300 - Pomona Mutual Aid Facility Tools	0	0	400,000	0	0	
SVOC Auditorium	0	349,975	1,149,964	499,844	0	
24656642 - L1_Shoemaker Substation Building Improvement	0	0	150,004	150,002	0	
Technology Components - Mainframe Modernization ORU	0	0	0	0	0	
Blooming Grove Building Management System	0	0	0	0	0	
Upgrade Metrix IDR Load Forecasting	0	0	0	0	0	
Blooming Grove Haz Mat Shed	0	0	0	0	0	
10106292 - Electric Meter 1st Install Bkt	0	0	800,000	800,000	800,000	
<b>Grand Total</b>		<b>\$ 11,848,892</b>	<b>\$ 374,975</b>	<b>\$ 53,676,594</b>	<b>\$ 57,497,061</b>	<b>\$ 37,842,090</b>